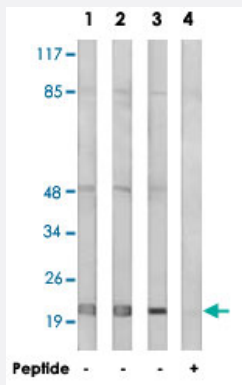


MRPL32 polyclonal antibody

Catalog # PAB17562 Size 100 ug

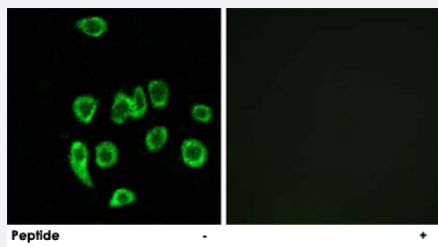
Applications



Western Blot (Cell lysate)

Western blot analysis of extracts from Jurkat cells (Lane 1), MCF-7 cells (Lane 2) and HepG2 cells (Lane 3 and lane 4), using MRPL32 polyclonal antibody (Cat # PAB17562).

Peptide "+" means "with peptide blocking".



Immunofluorescence

Immunofluorescence analysis of A-549 cells, using MRPL32 polyclonal antibody (Cat # PAB17562).

Peptide "+" means "with peptide blocking".

Specification

Product Description	Rabbit polyclonal antibody raised against synthetic peptide of MRPL32.
Immunogen	A synthetic peptide corresponding to internal of human MRPL32.
Host	Rabbit
Reactivity	Human
Specificity	This antibody detects endogenous levels of total MRPL32 protein.
Form	Liquid

Recommend Usage	Western Blot (1:500-1:1000) Immunofluorescence (1:500-1:1000) ELISA (1:40000) The optimal working dilution should be determined by the end user.
Storage Buffer	In PBS, pH 7.4 (150mM NaCl, 0.02% sodium azide, 50% glycerol)
Storage Instruction	Store at -20°C. Aliquot to avoid repeated freezing and thawing.
Note	This product contains sodium azide: a POISONOUS AND HAZARDOUS SUBSTANCE which should be handled by trained staff only.

Applications

- Western Blot (Cell lysate)

Western blot analysis of extracts from Jurkat cells (Lane 1), MCF-7 cells (Lane 2) and HepG2 cells (Lane 3 and lane 4), using MRPL32 polyclonal antibody (Cat # PAB17562).
Peptide "+" means "with peptide blocking".

- Immunofluorescence

Immunofluorescence analysis of A-549 cells, using MRPL32 polyclonal antibody (Cat # PAB17562).
Peptide "+" means "with peptide blocking".

- Enzyme-linked Immunoabsorbent Assay

Gene Info — MRPL32

Entrez GeneID	64983
Protein Accession#	Q9BYC8
Gene Name	MRPL32
Gene Alias	HSPC283, L32mt, MRP-L32, bMRP-59b
Gene Description	mitochondrial ribosomal protein L32
Gene Ontology	Hyperlink

Gene Summary

Mammalian mitochondrial ribosomal proteins are encoded by nuclear genes and help in protein synthesis within the mitochondrion. Mitochondrial ribosomes (mitoribosomes) consist of a small 28S subunit and a large 39S subunit. They have an estimated 75% protein to rRNA composition compared to prokaryotic ribosomes, where this ratio is reversed. Another difference between mammalian mitoribosomes and prokaryotic ribosomes is that the latter contain a 5S rRNA. Among different species, the proteins comprising the mitoribosome differ greatly in sequence, and sometimes in biochemical properties, which prevents easy recognition by sequence homology. This gene encodes a 39S subunit protein that belongs to the L32 ribosomal protein family. A pseudogene corresponding to this gene is found on chromosome Xp. [provided by RefSeq]

Other Designations

-