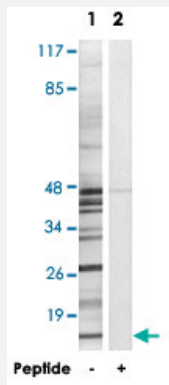


MRPS18C polyclonal antibody

Catalog # PAB17557 Size 100 ug

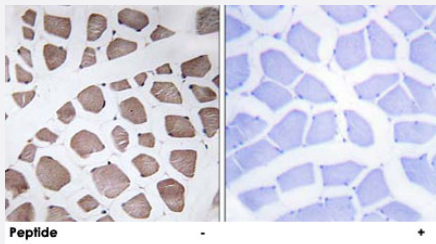
Applications



Western Blot (Cell lysate)

Western blot analysis of extracts from K-562 cells, using MRPS18C polyclonal antibody (Cat # PAB17557).

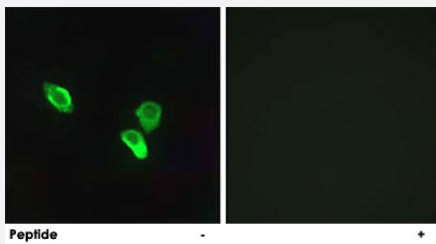
Peptide "+" means "with peptide blocking".



Immunohistochemistry (Formalin/PFA-fixed paraffin-embedded sections)

Immunohistochemistry analysis of paraffin-embedded human skeletal muscle tissue using MRPS18C polyclonal antibody (Cat # PAB17557).

Peptide "+" means "with peptide blocking".



Immunofluorescence

Immunofluorescence analysis of MCF-7 cells, using MRPS18C polyclonal antibody (Cat # PAB17557).

Peptide "+" means "with peptide blocking".

Specification

Product Description

Rabbit polyclonal antibody raised against synthetic peptide of MRPS18C.

Immunogen	A synthetic peptide corresponding to internal of human MRPS18C.
Host	Rabbit
Reactivity	Human, Mouse
Specificity	This antibody detects endogenous levels of total MRPS18C protein.
Form	Liquid
Recommend Usage	Western Blot (1:500-1:1000) Immunohistochemistry (1:50-1:100) Immunofluorescence (1:500-1:1000) ELISA (1:40000) The optimal working dilution should be determined by the end user.
Storage Buffer	In PBS, pH 7.4 (150mM NaCl, 0.02% sodium azide, 50% glycerol)
Storage Instruction	Store at -20°C. Aliquot to avoid repeated freezing and thawing.
Note	This product contains sodium azide: a POISONOUS AND HAZARDOUS SUBSTANCE which should be handled by trained staff only.

Applications

- Western Blot (Cell lysate)

Western blot analysis of extracts from K-562 cells, using MRPS18C polyclonal antibody (Cat # PAB17557).
Peptide "+" means "with peptide blocking".

- Immunohistochemistry (Formalin/PFA-fixed paraffin-embedded sections)

Immunohistochemistry analysis of paraffin-embedded human skeletal muscle tissue using MRPS18C polyclonal antibody (Cat # PAB17557).
Peptide "+" means "with peptide blocking".

- Immunofluorescence

Immunofluorescence analysis of MCF-7 cells, using MRPS18C polyclonal antibody (Cat # PAB17557).
Peptide "+" means "with peptide blocking".

- Enzyme-linked Immunoabsorbent Assay

Gene Info — MRPS18C

Entrez GeneID

[51023](#)

Protein Accession#	Q9Y3D5
Gene Name	MRPS18C
Gene Alias	CGI-134, FLJ11146, FLJ22967, MRP-S18-1, MRPS18-1
Gene Description	mitochondrial ribosomal protein S18C
Gene Ontology	Hyperlink
Gene Summary	<p>Mammalian mitochondrial ribosomal proteins are encoded by nuclear genes and help in protein synthesis within the mitochondrion. Mitochondrial ribosomes (mitoribosomes) consist of a small 28S subunit and a large 39S subunit. They have an estimated 75% protein to rRNA composition compared to prokaryotic ribosomes, where this ratio is reversed. Another difference between mammalian mitoribosomes and prokaryotic ribosomes is that the latter contain a 5S rRNA. Among different species, the proteins comprising the mitoribosome differ greatly in sequence, and sometimes in biochemical properties, which prevents easy recognition by sequence homology. This gene encodes a 28S subunit protein that belongs to the ribosomal protein S18P family. The encoded protein is one of three that has significant sequence similarity to bacterial S18 proteins. The primary sequences of the three human mitochondrial S18 proteins are no more closely related to each other than they are to the prokaryotic S18 proteins. Pseudogenes corresponding to this gene are found on chromosomes 8p, 12p, 15q, and 22q. [provided by RefSeq]</p>
Other Designations	mitochondrial ribosomal protein S18-1

Disease

- [Tobacco Use Disorder](#)