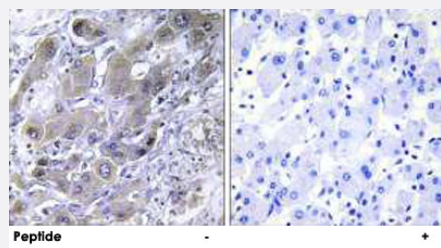


MRPS18A polyclonal antibody

Catalog # PAB17556 Size 100 ug

Applications



Immunohistochemistry (Formalin/PFA-fixed paraffin-embedded sections)

Immunohistochemistry analysis of paraffin-embedded human liver carcinoma tissue using MRPS18A polyclonal antibody (Cat # PAB17556).

Peptide "+" means "with peptide blocking".

Specification

Product Description	Rabbit polyclonal antibody raised against synthetic peptide of MRPS18A.
Immunogen	A synthetic peptide corresponding to internal of human MRPS18A.
Host	Rabbit
Reactivity	Human, Mouse, Rat
Specificity	This antibody detects endogenous levels of total MRPS18A protein.
Form	Liquid
Recommend Usage	Immunohistochemistry (1:50-1:100) ELISA (1:40000) The optimal working dilution should be determined by the end user.
Storage Buffer	In PBS, pH 7.4 (150mM NaCl, 0.02% sodium azide, 50% glycerol)
Storage Instruction	Store at -20°C. Aliquot to avoid repeated freezing and thawing.
Note	This product contains sodium azide: a POISONOUS AND HAZARDOUS SUBSTANCE which should be handled by trained staff only.

Applications

- Immunohistochemistry (Formalin/PFA-fixed paraffin-embedded sections)

Immunohistochemistry analysis of paraffin-embedded human liver carcinoma tissue using MRPS18A polyclonal antibody (Cat # PAB17556).

Peptide "+" means "with peptide blocking".

- Enzyme-linked Immunoabsorbent Assay

Gene Info — MRPS18A

Entrez GeneID [55168](#)

Protein Accession# [Q9NVS2](#)

Gene Name MRPS18A

Gene Alias FLJ10548, HumanS18b, MRP-S18-3, MRPS18-3, S18bmt

Gene Description mitochondrial ribosomal protein S18A

Gene Ontology [Hyperlink](#)

Gene Summary

Mammalian mitochondrial ribosomal proteins are encoded by nuclear genes and help in protein synthesis within the mitochondrion. Mitochondrial ribosomes (mitoribosomes) consist of a small 28 S subunit and a large 39S subunit. They have an estimated 75% protein to rRNA composition compared to prokaryotic ribosomes, where this ratio is reversed. Another difference between mammalian mitoribosomes and prokaryotic ribosomes is that the latter contain a 5S rRNA. Among different species, the proteins comprising the mitoribosome differ greatly in sequence, and sometimes in biochemical properties, which prevents easy recognition by sequence homology. This gene encodes a 28S subunit protein that belongs to the ribosomal protein S18P family. The encoded protein is one of three that has significant sequence similarity to bacterial S18 proteins. The primary sequences of the three human mitochondrial S18 proteins are no more closely related to each other than they are to the prokaryotic S18 proteins. A pseudogene corresponding to this gene is found on chromosome 3p. [provided by RefSeq]

Other Designations OTTHUMP00000016499|mitochondrial ribosomal protein S18-3

Disease

- [Cardiovascular Diseases](#)
- [Diabetes Mellitus](#)

- [Edema](#)