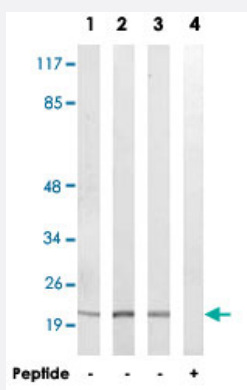


# MRPS17 polyclonal antibody

Catalog # PAB17555      Size 100 ug

## Applications



### Western Blot (Cell lysate)

Western blot analysis of extracts from A-549 cells (Lane 1), RAW 264.7 cells (Lane 2 and lane 4) and NIH/3T3 cells (Lane 3), using MRPS17 polyclonal antibody (Cat # PAB17555).

Peptide "+" means "with peptide blocking".

## Specification

**Product Description** Rabbit polyclonal antibody raised against synthetic peptide of MRPS17.

**Immunogen** A synthetic peptide corresponding to internal of human MRPS17.

**Host** Rabbit

**Reactivity** Human, Mouse

**Specificity** This antibody detects endogenous levels of total MRPS17 protein

**Form** Liquid

**Recommend Usage** Western Blot (1:500-1:1000)  
ELISA (1:40000)  
The optimal working dilution should be determined by the end user.

**Storage Buffer** In PBS, pH 7.4 (150mM NaCl, 0.02% sodium azide, 50% glycerol)

**Storage Instruction** Store at -20°C.  
Aliquot to avoid repeated freezing and thawing.

**Note**

This product contains sodium azide: a POISONOUS AND HAZARDOUS SUBSTANCE which should be handled by trained staff only.

## Applications

- Western Blot (Cell lysate)

Western blot analysis of extracts from A-549 cells (Lane 1), RAW 264.7 cells (Lane 2 and lane 4) and NIH/3T3 cells (Lane 3), using MRPS17 polyclonal antibody (Cat # PAB17555).

Peptide "+" means "with peptide blocking".

- Enzyme-linked Immunoabsorbent Assay

## Gene Info — MRPS17

Entrez GeneID	<a href="#">51373</a>
---------------	-----------------------

Protein Accession#	<a href="#">Q9Y2R5</a>
--------------------	------------------------

Gene Name	MRPS17
-----------	--------

Gene Alias	HSPC011, MRP-S17, RPMS17
------------	--------------------------

Gene Description	mitochondrial ribosomal protein S17
------------------	-------------------------------------

Gene Ontology	<a href="#">Hyperlink</a>
---------------	---------------------------

Gene Summary	<p>Mammalian mitochondrial ribosomal proteins are encoded by nuclear genes and help in protein synthesis within the mitochondrion. Mitochondrial ribosomes (mitoribosomes) consist of a small 28S subunit and a large 39S subunit. They have an estimated 75% protein to rRNA composition compared to prokaryotic ribosomes, where this ratio is reversed. Another difference between mammalian mitoribosomes and prokaryotic ribosomes is that the latter contain a 5S rRNA. Among different species, the proteins comprising the mitoribosome differ greatly in sequence, and sometimes in biochemical properties, which prevents easy recognition by sequence homology. This gene encodes a 28S subunit protein that belongs to the ribosomal protein S17P family. The encoded protein is moderately conserved between human mitochondrial and prokaryotic ribosomal proteins. Pseudogenes corresponding to this gene are found on chromosomes 1p, 3p, 6q, 14p, 18q, and Xq. [provided by RefSeq]</p>
--------------	--

Other Designations	28S ribosomal protein S17, mitochondrial
--------------------	--