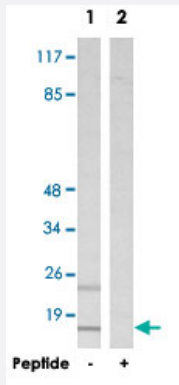


# MRPS16 polyclonal antibody

Catalog # PAB17554      Size 100 ug

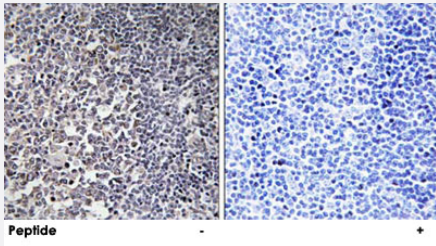
## Applications



### Western Blot (Cell lysate)

Western blot analysis of extracts from HepG2 cells, using MRPS16 polyclonal antibody (Cat # PAB17554).

Peptide "+" means "with peptide blocking".



### Immunohistochemistry (Formalin/PFA-fixed paraffin-embedded sections)

Immunohistochemistry analysis of paraffin-embedded human tonsil tissue using MRPS16 polyclonal antibody (Cat # PAB17554).

Peptide "+" means "with peptide blocking".

## Specification

<b>Product Description</b>	Rabbit polyclonal antibody raised against synthetic peptide of MRPS16.
<b>Immunogen</b>	A synthetic peptide corresponding to internal of human MRPS16.
<b>Host</b>	Rabbit
<b>Reactivity</b>	Human, Mouse
<b>Specificity</b>	This antibody detects endogenous levels of total MRPS16 protein
<b>Form</b>	Liquid

<b>Recommend Usage</b>	Western Blot (1:500-1:1000) Immunohistochemistry (1:50-1:100) ELISA (1:40000) The optimal working dilution should be determined by the end user.
<b>Storage Buffer</b>	In PBS, pH 7.4 (150mM NaCl, 0.02% sodium azide, 50% glycerol)
<b>Storage Instruction</b>	Store at -20°C. Aliquot to avoid repeated freezing and thawing.
<b>Note</b>	This product contains sodium azide: a POISONOUS AND HAZARDOUS SUBSTANCE which should be handled by trained staff only.

## Applications

- Western Blot (Cell lysate)

Western blot analysis of extracts from HepG2 cells, using MRPS16 polyclonal antibody (Cat # PAB17554).  
Peptide "+" means "with peptide blocking".

- Immunohistochemistry (Formalin/PFA-fixed paraffin-embedded sections)

Immunohistochemistry analysis of paraffin-embedded human tonsil tissue using MRPS16 polyclonal antibody (Cat # PAB17554).  
Peptide "+" means "with peptide blocking".

- Enzyme-linked Immunoabsorbent Assay

## Gene Info — MRPS16

<b>Entrez GeneID</b>	<a href="#">51021</a>
<b>Protein Accession#</b>	<a href="#">Q9Y3D3</a>
<b>Gene Name</b>	MRPS16
<b>Gene Alias</b>	CGI-132, COXPD2, FLJ22062, FLJ40972, MRP-S16, RPMS16
<b>Gene Description</b>	mitochondrial ribosomal protein S16
<b>Omim ID</b>	<a href="#">609204</a> <a href="#">610498</a>
<b>Gene Ontology</b>	<a href="#">Hyperlink</a>

**Gene Summary**

Mammalian mitochondrial ribosomal proteins are encoded by nuclear genes and help in protein synthesis within the mitochondrion. Mitochondrial ribosomes (mitoribosomes) consist of a small 28S subunit and a large 39S subunit. They have an estimated 75% protein to rRNA composition compared to prokaryotic ribosomes, where this ratio is reversed. Another difference between mammalian mitoribosomes and prokaryotic ribosomes is that the latter contain a 5S rRNA. Among different species, the proteins comprising the mitoribosome differ greatly in sequence, and sometimes in biochemical properties, which prevents easy recognition by sequence homology. This gene encodes a 28S subunit protein that belongs to the ribosomal protein S16P family. The encoded protein is one of the most highly conserved ribosomal proteins between mammalian and yeast mitochondria. Three pseudogenes (located at 8q21.3, 20q13.32, 22q12-q13.1) for this gene have been described. [provided by RefSeq]

**Other Designations**

28S ribosomal protein S16, mitochondrial|OTTHUMP00000019801

**Disease**

- [Alzheimer Disease](#)
- [Genetic Predisposition to Disease](#)