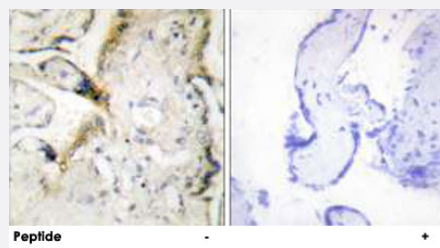


LAMA2 polyclonal antibody

Catalog # PAB17543 Size 100 ug

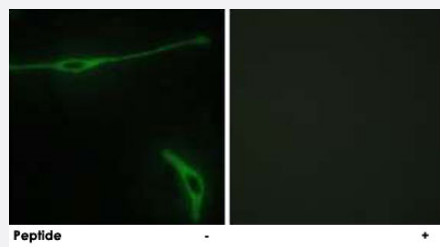
Applications



Immunohistochemistry (Formalin/PFA-fixed paraffin-embedded sections)

Immunohistochemistry analysis of paraffin-embedded human placenta tissue using LAMA2 polyclonal antibody (Cat # PAB17543).

Peptide "+" means "with peptide blocking".



Immunofluorescence

Immunofluorescence analysis of NIH/3T3 cells, using LAMA2 polyclonal antibody (Cat # PAB17543).

Peptide "+" means "with peptide blocking".

Specification

Product Description	Rabbit polyclonal antibody raised against synthetic peptide of LAMA2.
Immunogen	A synthetic peptide corresponding to internal of human LAMA2.
Host	Rabbit
Reactivity	Human, Mouse
Specificity	This antibody detects endogenous levels of total LAMA2 protein.
Form	Liquid

Recommend Usage	Immunohistochemistry (1:50-1:100) Immunofluorescence (1:500-1:1000) ELISA (1:20000) The optimal working dilution should be determined by the end user.
Storage Buffer	In PBS, pH 7.4 (150mM NaCl, 0.02% sodium azide, 50% glycerol)
Storage Instruction	Store at -20°C. Aliquot to avoid repeated freezing and thawing.
Note	This product contains sodium azide: a POISONOUS AND HAZARDOUS SUBSTANCE which should be handled by trained staff only.

Applications

- Immunohistochemistry (Formalin/PFA-fixed paraffin-embedded sections)

Immunohistochemistry analysis of paraffin-embedded human placenta tissue using LAMA2 polyclonal antibody (Cat # PAB17543).

Peptide "+" means "with peptide blocking".

- Immunofluorescence

Immunofluorescence analysis of NIH/3T3 cells, using LAMA2 polyclonal antibody (Cat # PAB17543).

Peptide "+" means "with peptide blocking".

- Enzyme-linked Immunoabsorbent Assay

Gene Info — LAMA2

Entrez GeneID	3908
Protein Accession#	P24043
Gene Name	LAMA2
Gene Alias	LAMM
Gene Description	laminin, alpha 2
Omim ID	156225 607855
Gene Ontology	Hyperlink

Gene Summary

Laminin, an extracellular protein, is a major component of the basement membrane. It is thought to mediate the attachment, migration, and organization of cells into tissues during embryonic development by interacting with other extracellular matrix components. It is composed of three subunits, alpha, beta, and gamma, which are bound to each other by disulfide bonds into a cross-shaped molecule. This gene encodes the alpha 2 chain, which constitutes one of the subunits of laminin 2 (merosin) and laminin 4 (s-merosin). Mutations in this gene have been identified as the cause of congenital merosin-deficient muscular dystrophy. Two transcript variants encoding different proteins have been found for this gene. [provided by RefSeq]

Other Designations

OTTHUMP00000017189|laminin M|laminin alpha 2 subunit|merosin heavy chain

Pathway

- [Arrhythmogenic right ventricular cardiomyopathy \(ARVC\)](#)
- [ECM-receptor interaction](#)
- [Focal adhesion](#)
- [Hypertrophic cardiomyopathy \(HCM\)](#)
- [Pathways in cancer](#)
- [Small cell lung cancer](#)

Disease

- [Genetic Predisposition to Disease](#)
- [Leprosy](#)
- [Tobacco Use Disorder](#)