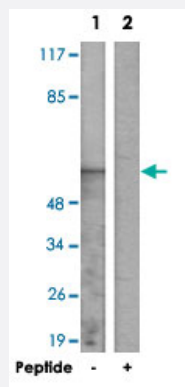


TCEB3C polyclonal antibody

Catalog # PAB17541

Size 100 ug

Applications



Western Blot (Cell lysate)

Western blot analysis of extracts from COLO 205 cells, using TCEB3C polyclonal antibody (Cat # PAB17541).

Peptide "+" means "with peptide blocking".

Specification

Product Description	Rabbit polyclonal antibody raised against synthetic peptide of TCEB3C.
Immunogen	A synthetic peptide corresponding to internal of human TCEB3C.
Host	Rabbit
Reactivity	Human
Specificity	This antibody detects endogenous levels of total TCEB3C protein.
Form	Liquid
Recommend Usage	Western Blot (1:500-1:1000) ELISA (1:10000) The optimal working dilution should be determined by the end user.
Storage Buffer	In PBS, pH 7.4 (150mM NaCl, 0.02% sodium azide, 50% glycerol)
Storage Instruction	Store at -20°C. Aliquot to avoid repeated freezing and thawing.

Note

This product contains sodium azide: a POISONOUS AND HAZARDOUS SUBSTANCE which should be handled by trained staff only.

Applications

- Western Blot (Cell lysate)

Western blot analysis of extracts from COLO 205 cells, using TCEB3C polyclonal antibody (Cat # PAB17541).
Peptide "+" means "with peptide blocking".

- Enzyme-linked Immunoabsorbent Assay

Gene Info — TCEB3C

Entrez GeneID	162699
---------------	------------------------

Protein Accession#	Q8NG57
--------------------	------------------------

Gene Name	TCEB3C
-----------	--------

Gene Alias	HsT829, TCEB3L2
------------	-----------------

Gene Description	transcription elongation factor B polypeptide 3C (elongin A3)
------------------	---

Gene Ontology	Hyperlink
---------------	---------------------------

Other Designations	OTTHUMP00000163488 elongin A3 transcription elongation factor B polypeptide 3C
--------------------	--