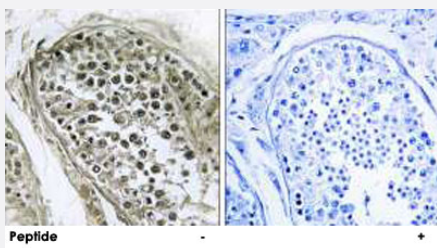


# GAB4 polyclonal antibody

Catalog # PAB17534

Size 100 ug

## Applications



### Immunohistochemistry (Formalin/PFA-fixed paraffin-embedded sections)

Immunohistochemistry analysis of paraffin-embedded human testis tissue using GAB4 polyclonal antibody (Cat # PAB17534).

Peptide "+" means "with peptide blocking".

## Specification

**Product Description** Rabbit polyclonal antibody raised against synthetic peptide of GAB4.

**Immunogen** A synthetic peptide corresponding to internal of human GAB4.

**Host** Rabbit

**Reactivity** Human

**Specificity** This antibody detects endogenous levels of total GAB4 protein.

**Form** Liquid

**Recommend Usage** Immunohistochemistry (1:50-1:100)  
ELISA (1:40000)  
The optimal working dilution should be determined by the end user.

**Storage Buffer** In PBS, pH 7.4 (150mM NaCl, 0.02% sodium azide, 50% glycerol)

**Storage Instruction** Store at -20°C.  
Aliquot to avoid repeated freezing and thawing.

**Note** This product contains sodium azide: a POISONOUS AND HAZARDOUS SUBSTANCE which should be handled by trained staff only.

## Applications

- Immunohistochemistry (Formalin/PFA-fixed paraffin-embedded sections)

Immunohistochemistry analysis of paraffin-embedded human testis tissue using GAB4 polyclonal antibody (Cat # PAB17534).  
Peptide "+" means "with peptide blocking".

- Enzyme-linked Immunoabsorbent Assay

## Gene Info — GAB4

Entrez GeneID	<a href="#">128954</a>
Protein Accession#	<a href="#">Q2WGN9</a>
Gene Name	GAB4
Gene Alias	-
Gene Description	GRB2-associated binding protein family, member 4
Gene Ontology	<a href="#">Hyperlink</a>
Gene Summary	O
Other Designations	GAB2-like GRB2-associated binder 2-like protein OTTHUMP00000195887

## Disease

- [Celiac Disease](#)
- [Genetic Predisposition to Disease](#)