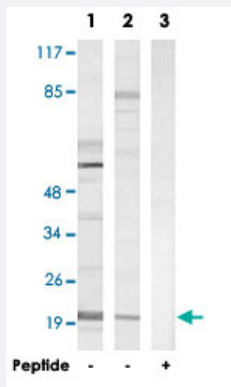


FGF22 polyclonal antibody

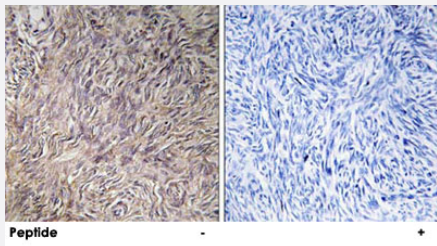
Catalog # PAB17533 Size 100 ug

Applications



Western Blot (Cell lysate)

Western blot analysis of extracts from Jurkat cells (Lane 1 and lane 3) and HT-29 cells (Lane 2), using FGF22 polyclonal antibody (Cat # PAB17533). Peptide "+" means "with peptide blocking".



Immunohistochemistry (Formalin/PFA-fixed paraffin-embedded sections)

Immunohistochemistry analysis of paraffin-embedded human ovary tissue using FGF22 polyclonal antibody (Cat # PAB17533). Peptide "+" means "with peptide blocking".

Specification

Product Description	Rabbit polyclonal antibody raised against synthetic peptide of FGF22.
Immunogen	A synthetic peptide corresponding to internal of human FGF22.
Host	Rabbit
Reactivity	Human, Mouse, Rat
Specificity	This antibody detects endogenous levels of total FGF22 protein.
Form	Liquid

Recommend Usage	Western Blot (1:500-1:1000) Immunohistochemistry (1:50-1:100) Immunofluorescence (1:500-1:1000) ELISA (1:60000) The optimal working dilution should be determined by the end user.
Storage Buffer	In PBS, pH 7.4 (150mM NaCl, 0.02% sodium azide, 50% glycerol)
Storage Instruction	Store at -20°C. Aliquot to avoid repeated freezing and thawing.
Note	This product contains sodium azide: a POISONOUS AND HAZARDOUS SUBSTANCE which should be handled by trained staff only.

Applications

- Western Blot (Cell lysate)

Western blot analysis of extracts from Jurkat cells (Lane 1 and lane 3) and HT-29 cells (Lane 2), using FGF22 polyclonal antibody (Cat # PAB17533).

Peptide "+" means "with peptide blocking".

- Immunohistochemistry (Formalin/PFA-fixed paraffin-embedded sections)

Immunohistochemistry analysis of paraffin-embedded human ovary tissue using FGF22 polyclonal antibody (Cat # PAB17533).

Peptide "+" means "with peptide blocking".

- Immunofluorescence

- Enzyme-linked Immunoabsorbent Assay

Gene Info — FGF22

Entrez GeneID	27006
Protein Accession#	Q9HCT0
Gene Name	FGF22
Gene Alias	-
Gene Description	fibroblast growth factor 22
Omim ID	605831
Gene Ontology	Hyperlink

Gene Summary

The protein encoded by this gene is a member of the fibroblast growth factor (FGF) family. FGF family members possess broad mitogenic and cell survival activities and are involved in a variety of biological processes including embryonic development, cell growth, morphogenesis, tissue repair, tumor growth and invasion. The mouse homolog of this gene was found to be preferentially expressed in the inner root sheath of the hair follicle, which suggested a role in hair development. [provided by RefSeq]

Other Designations

-

Pathway

- [MAPK signaling pathway](#)
- [Melanoma](#)
- [Pathways in cancer](#)
- [Regulation of actin cytoskeleton](#)