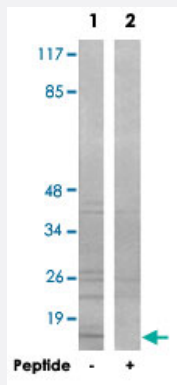


# COX7A2P2 polyclonal antibody

Catalog # PAB17523      Size 100 ug

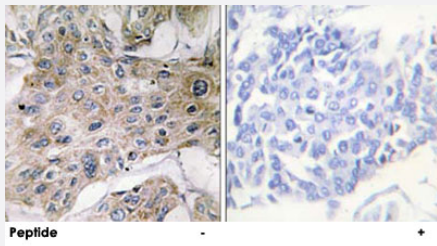
## Applications



### Western Blot (Tissue lysate)

Western blot analysis of extracts from rat heart cells, using COX7A2P2 polyclonal antibody (Cat # PAB17523).

Peptide "+" means "with peptide blocking".



### Immunohistochemistry (Formalin/PFA-fixed paraffin-embedded sections)

Immunohistochemistry analysis of paraffin-embedded human breast carcinoma tissue using COX7A2P2 polyclonal antibody (Cat # PAB17523).

Peptide "+" means "with peptide blocking".

## Specification

<b>Product Description</b>	Rabbit polyclonal antibody raised against synthetic peptide of COX7A2P2.
<b>Immunogen</b>	A synthetic peptide corresponding to internal of human COX7A2P2.
<b>Host</b>	Rabbit
<b>Reactivity</b>	Human, Mouse, Rat
<b>Specificity</b>	This antibody detects endogenous levels of total COX7A2P2 protein.
<b>Form</b>	Liquid

<b>Recommend Usage</b>	Western Blot (1:500-1:1000) Immunohistochemistry (1:50-1:100) ELISA (1:10000) The optimal working dilution should be determined by the end user.
<b>Storage Buffer</b>	In PBS, pH 7.4 (150mM NaCl, 0.02% sodium azide, 50% glycerol)
<b>Storage Instruction</b>	Store at -20°C. Aliquot to avoid repeated freezing and thawing.
<b>Note</b>	This product contains sodium azide: a POISONOUS AND HAZARDOUS SUBSTANCE which should be handled by trained staff only.

## Applications

- Western Blot (Tissue lysate)

Western blot analysis of extracts from rat heart cells, using COX7A2P2 polyclonal antibody (Cat # PAB17523).  
Peptide "+" means "with peptide blocking".

- Immunohistochemistry (Formalin/PFA-fixed paraffin-embedded sections)

Immunohistochemistry analysis of paraffin-embedded human breast carcinoma tissue using COX7A2P2 polyclonal antibody (Cat # PAB17523).  
Peptide "+" means "with peptide blocking".

- Enzyme-linked Immunoabsorbent Assay

## Gene Info — COX7AP2

<b>Entrez GeneID</b>	<a href="#">1348</a>
<b>Protein Accession#</b>	<a href="#">O60397</a>
<b>Gene Name</b>	COX7AP2
<b>Gene Alias</b>	COX7A3, COX7AL, COX7AL2
<b>Gene Description</b>	cytochrome c oxidase subunit VIIa pseudogene 2
<b>Omim ID</b>	<a href="#">123997</a>
<b>Gene Ontology</b>	<a href="#">Hyperlink</a>
<b>Other Designations</b>	-