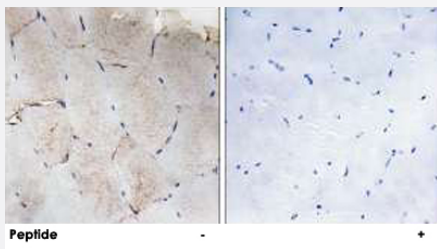


COL12A1 polyclonal antibody

Catalog # PAB17518 Size 100 ug

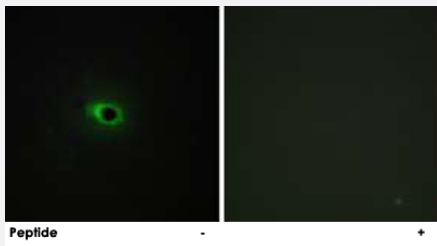
Applications



Immunohistochemistry (Formalin/PFA-fixed paraffin-embedded sections)

Immunohistochemistry analysis of paraffin-embedded human skeletal muscle tissue using COL12A1 polyclonal antibody (Cat # PAB17518).

Peptide "+" means "with peptide blocking".



Immunofluorescence

Immunofluorescence analysis of COS-7 cells, using COL12A1 polyclonal antibody (Cat # PAB17518).

Peptide "+" means "with peptide blocking".

Specification

Product Description	Rabbit polyclonal antibody raised against synthetic peptide of COL12A1.
Immunogen	A synthetic peptide corresponding to internal of human COL12A1.
Host	Rabbit
Reactivity	Human
Specificity	This antibody detects endogenous levels of total COL12A1 protein.
Form	Liquid

Recommend Usage	Immunohistochemistry (1:50-1:100) Immunofluorescence (1:500-1:1000) ELISA (1:40000) The optimal working dilution should be determined by the end user.
Storage Buffer	In PBS, pH 7.4 (150mM NaCl, 0.02% sodium azide, 50% glycerol)
Storage Instruction	Store at -20°C. Aliquot to avoid repeated freezing and thawing.
Note	This product contains sodium azide: a POISONOUS AND HAZARDOUS SUBSTANCE which should be handled by trained staff only.

Applications

- Immunohistochemistry (Formalin/PFA-fixed paraffin-embedded sections)

Immunohistochemistry analysis of paraffin-embedded human skeletal muscle tissue using COL12A1 polyclonal antibody (Cat # PAB17518).

Peptide "+" means "with peptide blocking".

- Immunofluorescence

Immunofluorescence analysis of COS-7 cells, using COL12A1 polyclonal antibody (Cat # PAB17518).

Peptide "+" means "with peptide blocking".

- Enzyme-linked Immunoabsorbent Assay

Gene Info — COL12A1

Entrez GeneID	1303
Protein Accession#	Q99715
Gene Name	COL12A1
Gene Alias	BA209D8.1, COL12A1L, DJ234P15.1
Gene Description	collagen, type XII, alpha 1
Omim ID	120320
Gene Ontology	Hyperlink

Gene Summary

This gene encodes the alpha chain of type XII collagen, a member of the FACIT (fibril-associated collagens with interrupted triple helices) collagen family. Type XII collagen is a homotrimer found in association with type I collagen, an association that is thought to modify the interactions between collagen I fibrils and the surrounding matrix. Alternatively spliced transcript variants encoding different isoforms have been identified. [provided by RefSeq]

Other Designations

OTTHUMP00000016752|collagen type XII proteoglycan|collagen, type XII, alpha 1-like

Publication Reference

- [ID3 contributes to cerebrospinal fluid seeding and poor prognosis in medulloblastoma.](#)

Phi JH, Choi SA, Lim SH, Lee J, Wang KC, Park SH, Kim SK.

BMC Cancer 2013 Jun; 13:291.

Application: IHC-P, Human, Medulloblastoma

Disease

- [Adenocarcinoma](#)
- [Esophageal Neoplasms](#)
- [Rupture](#)