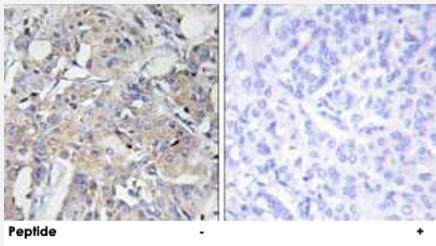


COL6A3 polyclonal antibody

Catalog # PAB17517 Size 100 ug

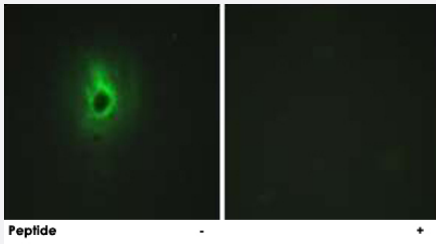
Applications



Immunohistochemistry (Formalin/PFA-fixed paraffin-embedded sections)

Immunohistochemistry analysis of paraffin-embedded human breast carcinoma tissue using COL6A3 polyclonal antibody (Cat # PAB17517).

Peptide "+" means "with peptide blocking".



Immunofluorescence

Immunofluorescence analysis of HeLa cells, using COL6A3 polyclonal antibody (Cat # PAB17517).

Peptide "+" means "with peptide blocking".

Specification

Product Description	Rabbit polyclonal antibody raised against synthetic peptide of COL6A3.
Immunogen	A synthetic peptide corresponding to amino acids 2261-2310 of human COL6A3.
Host	Rabbit
Theoretical MW (kDa)	343
Reactivity	Human, Mouse
Specificity	This antibody detects endogenous levels of total COL6A3 protein.
Form	Liquid

Purification	The antibody was purified from rabbit antiserum by affinity-chromatography using immunogen.
Recommend Usage	ELISA (1:40000) Immunofluorescence (1:100-1:500) Immunohistochemistry (1:50-1:100) The optimal working dilution should be determined by the end user.
Storage Buffer	In PBS (without Mg ²⁺ and Ca ²⁺), 150 mM NaCl, pH 7.4 (50% glycerol, 0.02% sodium azide).
Storage Instruction	Store at -20°C. Aliquot to avoid repeated freezing and thawing.
Note	This product contains sodium azide: a POISONOUS AND HAZARDOUS SUBSTANCE which should be handled by trained staff only.

Applications

- Immunohistochemistry (Formalin/PFA-fixed paraffin-embedded sections)

Immunohistochemistry analysis of paraffin-embedded human breast carcinoma tissue using COL6A3 polyclonal antibody (Cat # PAB17517).

Peptide "+" means "with peptide blocking".

- Immunofluorescence

Immunofluorescence analysis of HeLa cells, using COL6A3 polyclonal antibody (Cat # PAB17517).

Peptide "+" means "with peptide blocking".

- Enzyme-linked Immunoabsorbent Assay

Gene Info — COL6A3

Entrez GeneID	1293
Protein Accession#	P12111
Gene Name	COL6A3
Gene Alias	DKFZp686D23123, DKFZp686K04147, DKFZp686N0262, FLJ34702, FLJ98399
Gene Description	collagen, type VI, alpha 3
Omim ID	120250 158810 254090
Gene Ontology	Hyperlink

Gene Summary

This gene encodes the alpha-3 chain, one of the three alpha chains of type VI collagen, a beaded filament collagen found in most connective tissues. The alpha-3 chain of type VI collagen is much larger than the alpha-1 and -2 chains. This difference in size is largely due to an increase in the number of subdomains, similar to von Willebrand Factor type A domains, that are found in the amino terminal globular domain of all the alpha chains. These domains have been shown to bind extracellular matrix proteins, an interaction that explains the importance of this collagen in organizing matrix components. Mutations in the type VI collagen genes are associated with Bethlem myopathy, a rare autosomal dominant proximal myopathy with early childhood onset. Mutations in this gene are also a cause of Ullrich congenital muscular dystrophy, also referred to as Ullrich scleroatonic muscular dystrophy, an autosomal recessive congenital myopathy that is more severe than Bethlem myopathy. Multiple transcript variants have been identified, but the full-length nature of only some of these variants has been described. [provided by RefSeq]

Other Designations

alpha 3 type VI collagen|collagen VI, alpha-3 polypeptide

Publication Reference

- [TAF4 Inactivation Reveals the 3 Dimensional Growth Promoting Activities of Collagen 6A3.](#)

Martianov I, Cler E, Duluc I, Vicaire S, Philipps M, Freund JN, Davidson I.

PLoS One 2014 Feb; 9(2):e87365.

Application: IF, Mouse, MEFs

Pathway

- [ECM-receptor interaction](#)
- [Focal adhesion](#)

Disease

- [Cerebral Hemorrhage](#)
- [Genetic Predisposition to Disease](#)
- [Hypertension](#)
- [Intracranial Hemorrhages](#)
- [Stroke](#)
- [Subarachnoid Hemorrhage](#)
- [Tobacco Use Disorder](#)