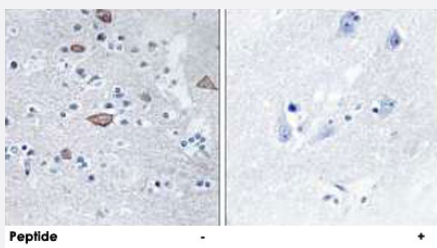


CEND1 polyclonal antibody

Catalog # PAB17506

Size 100 ug

Applications



Immunohistochemistry (Formalin/PFA-fixed paraffin-embedded sections)

Immunohistochemistry analysis of paraffin-embedded human brain tissue using CEND1 polyclonal antibody (Cat # PAB17506).

Peptide "+" means "with peptide blocking".

Specification

Product Description Rabbit polyclonal antibody raised against synthetic peptide of CEND1.

Immunogen A synthetic peptide corresponding to N-terminus of human CEND1.

Host Rabbit

Reactivity Human

Specificity This antibody detects endogenous levels of total CEND1 protein.

Form Liquid

Recommend Usage Immunohistochemistry (1:50-1:100)
ELISA (1:5000)
The optimal working dilution should be determined by the end user.

Storage Buffer In PBS, pH 7.4 (150mM NaCl, 0.02% sodium azide, 50% glycerol)

Storage Instruction Store at -20°C.
Aliquot to avoid repeated freezing and thawing.

Note This product contains sodium azide: a POISONOUS AND HAZARDOUS SUBSTANCE which should be handled by trained staff only.

Applications

- Immunohistochemistry (Formalin/PFA-fixed paraffin-embedded sections)

Immunohistochemistry analysis of paraffin-embedded human brain tissue using CEND1 polyclonal antibody (Cat # PAB17506).
Peptide "+" means "with peptide blocking".

- Enzyme-linked Immunoabsorbent Assay

Gene Info — CEND1

Entrez GeneID	51286
Protein Accession#	Q8N111
Gene Name	CEND1
Gene Alias	BM88, FLJ90066, MGC34326
Gene Description	cell cycle exit and neuronal differentiation 1
Omim ID	608213
Gene Ontology	Hyperlink
Gene Summary	The protein encoded by this gene is a neuron-specific protein. The similar protein in pig enhances neuroblastoma cell differentiation in vitro and may be involved in neuronal differentiation in vivo. Multiple pseudogenes have been reported for this gene. [provided by RefSeq]
Other Designations	BM88 antigen