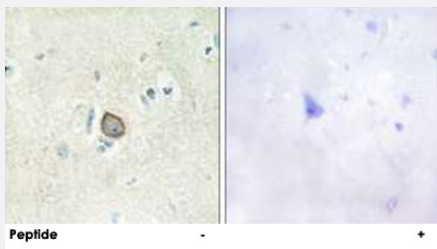


CELSR3 polyclonal antibody

Catalog # PAB17505 Size 100 ug

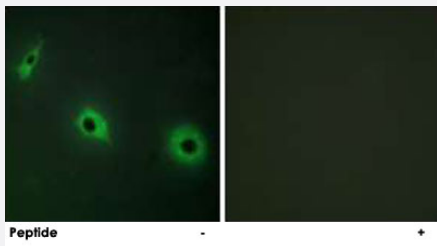
Applications



Immunohistochemistry (Formalin/PFA-fixed paraffin-embedded sections)

Immunohistochemistry analysis of paraffin-embedded human brain tissue using CELSR3 polyclonal antibody (Cat # PAB17505).

Peptide "+" means "with peptide blocking".



Immunofluorescence

Immunofluorescence analysis of HepG2 cells, using CELSR3 polyclonal antibody (Cat # PAB17505).

Peptide "+" means "with peptide blocking".

Specification

Product Description	Rabbit polyclonal antibody raised against synthetic peptide of CELSR3.
Immunogen	A synthetic peptide corresponding to internal of human CELSR3.
Host	Rabbit
Reactivity	Human
Specificity	This antibody detects endogenous levels of total CELSR3 protein.
Form	Liquid

Recommend Usage	Immunohistochemistry (1:50-1:100) Immunofluorescence (1:500-1:1000) ELISA (1:20000) The optimal working dilution should be determined by the end user.
Storage Buffer	In PBS, pH 7.4 (150mM NaCl, 0.02% sodium azide, 50% glycerol)
Storage Instruction	Store at -20°C. Aliquot to avoid repeated freezing and thawing.
Note	This product contains sodium azide: a POISONOUS AND HAZARDOUS SUBSTANCE which should be handled by trained staff only.

Applications

- Immunohistochemistry (Formalin/PFA-fixed paraffin-embedded sections)

Immunohistochemistry analysis of paraffin-embedded human brain tissue using CELSR3 polyclonal antibody (Cat # PAB17505).

Peptide "+" means "with peptide blocking".

- Immunofluorescence

Immunofluorescence analysis of HepG2 cells, using CELSR3 polyclonal antibody (Cat # PAB17505).

Peptide "+" means "with peptide blocking".

- Enzyme-linked Immunoabsorbent Assay

Gene Info — CELSR3

Entrez GeneID	1951
Protein Accession#	Q9NYQZ
Gene Name	CELSR3
Gene Alias	CDHF11, EGFL1, FMI1, HFMI1, MEGF2, RESDA1
Gene Description	cadherin, EGF LAG seven-pass G-type receptor 3 (flamingo homolog, Drosophila)
Omim ID	604264
Gene Ontology	Hyperlink

Gene Summary

The protein encoded by this gene is a member of the flamingo subfamily, part of the cadherin superfamily. The flamingo subfamily consists of nonclassic-type cadherins; a subpopulation that does not interact with catenins. The flamingo cadherins are located at the plasma membrane and have nine cadherin domains, seven epidermal growth factor-like repeats and two laminin A G-type repeats in their ectodomain. They also have seven transmembrane domains, a characteristic unique to this subfamily. It is postulated that these proteins are receptors involved in contact-mediated communication, with cadherin domains acting as homophilic binding regions and the EGF-like domains involved in cell adhesion and receptor-ligand interactions. The specific function of this particular member has not been determined. [provided by RefSeq]

Other Designations

EGF-like-domain, multiple 1|anchor protein|cadherin EGF LAG seven-pass G-type receptor 3|epidermal growth factor-like 1|multiple EGF-like domains 2