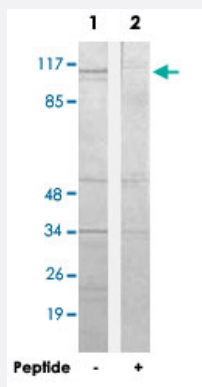


# CDCA2 polyclonal antibody

Catalog # PAB17500

Size 100 ug

## Applications



### Western Blot (Cell lysate)

Western blot analysis of extracts from 293 cells, using CDCA2 polyclonal antibody (Cat # PAB17500).

Peptide "+" means "with peptide blocking".

## Specification

**Product Description** Rabbit polyclonal antibody raised against synthetic peptide of CDCA2.

**Immunogen** A synthetic peptide corresponding to C-terminus of human CDCA2.

**Host** Rabbit

**Reactivity** Human

**Specificity** This antibody detects endogenous levels of total CDCA2 protein.

**Form** Liquid

**Recommend Usage** Western Blot (1:500-1:1000)  
ELISA (1:5000)  
The optimal working dilution should be determined by the end user.

**Storage Buffer** In PBS, pH 7.4 (150mM NaCl, 0.02% sodium azide, 50% glycerol)

**Storage Instruction** Store at -20°C.  
Aliquot to avoid repeated freezing and thawing.

**Note**

This product contains sodium azide: a POISONOUS AND HAZARDOUS SUBSTANCE which should be handled by trained staff only.

## Applications

- Western Blot (Cell lysate)

Western blot analysis of extracts from 293 cells, using CDCA2 polyclonal antibody (Cat # PAB17500).  
Peptide "+" means "with peptide blocking".

- Enzyme-linked Immunoabsorbent Assay

## Gene Info — CDCA2

Entrez GeneID	<a href="#">157313</a>
---------------	------------------------

Protein Accession#	<a href="#">Q69YH5</a>
--------------------	------------------------

Gene Name	CDCA2
-----------	-------

Gene Alias	FLJ25804, MGC129906, MGC129907, Repo-Man
------------	--

Gene Description	cell division cycle associated 2
------------------	----------------------------------

Gene Ontology	<a href="#">Hyperlink</a>
---------------	---------------------------

Other Designations	protein phosphatase 1 [gamma] (PPP1R3A) binding protein Repo-Man
--------------------	--

## Disease

- [Tobacco Use Disorder](#)