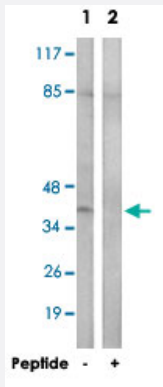


CCRL1 polyclonal antibody

Catalog # PAB17498 Size 100 ug

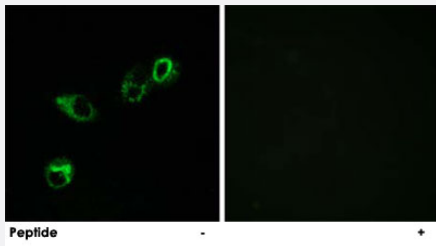
Applications



Western Blot (Cell lysate)

Western blot analysis of extracts from HepG2 cells, using CCRL1 polyclonal antibody (Cat # PAB17498).

Peptide "+" means "with peptide blocking".



Immunofluorescence

Immunofluorescence analysis of MCF-7 cells, using CCRL1 polyclonal antibody (Cat # PAB17498).

Peptide "+" means "with peptide blocking".

Specification

Product Description	Rabbit polyclonal antibody raised against synthetic peptide of CCRL1.
Immunogen	A synthetic peptide corresponding to C-terminus of human CCRL1.
Host	Rabbit
Reactivity	Human, Mouse
Specificity	This antibody detects endogenous levels of total CCRL1 protein.
Form	Liquid

Recommend Usage	Western Blot (1:500-1:1000) Immunofluorescence (1:500-1:1000) ELISA (1:60000) The optimal working dilution should be determined by the end user.
Storage Buffer	In PBS, pH 7.4 (150mM NaCl, 0.02% sodium azide, 50% glycerol)
Storage Instruction	Store at -20°C. Aliquot to avoid repeated freezing and thawing.
Note	This product contains sodium azide: a POISONOUS AND HAZARDOUS SUBSTANCE which should be handled by trained staff only.

Applications

- Western Blot (Cell lysate)

Western blot analysis of extracts from HepG2 cells, using CCRL1 polyclonal antibody (Cat # PAB17498).
Peptide "+" means "with peptide blocking".

- Immunofluorescence

Immunofluorescence analysis of MCF-7 cells, using CCRL1 polyclonal antibody (Cat # PAB17498).
Peptide "+" means "with peptide blocking".

- Enzyme-linked Immunoabsorbent Assay

Gene Info — CCRL1

Entrez GeneID	51554
Protein Accession#	Q9NPB9
Gene Name	CCRL1
Gene Alias	CC-CKR-11, CCBP2, CCR10, CCR11, CCX-CKR, CKR-11, PPR1, VSHK1
Gene Description	chemokine (C-C motif) receptor-like 1
Omim ID	606065
Gene Ontology	Hyperlink
Gene Summary	The protein encoded by this gene is a member of the G protein-coupled receptor family, and is a receptor for C-C type chemokines. This receptor has been shown to bind dendritic cell- and T cell-activated chemokines including CCL19/ELC, CCL21/SLC, and CCL25/TECK. Alternatively spliced transcript variants encoding the same protein have been described. [provided by RefSeq]

Other Designations

C-C chemokine receptor type 11|chemocentryx chemokine receptor|chemokine, cc motif, receptor-like protein 1|orphan seven-transmembrane receptor, chemokine related
