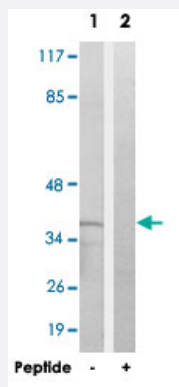


# TMEM30B polyclonal antibody

Catalog # PAB17496      Size 100 ug

## Applications



### Western Blot (Cell lysate)

Western blot analysis of extracts from K-562 cells, using TMEM30B polyclonal antibody (Cat # PAB17496).

Peptide "+" means "with peptide blocking".

## Specification

<b>Product Description</b>	Rabbit polyclonal antibody raised against synthetic peptide of TMEM30B.
<b>Immunogen</b>	A synthetic peptide corresponding to internal of human TMEM30B.
<b>Host</b>	Rabbit
<b>Reactivity</b>	Human
<b>Specificity</b>	This antibody detects endogenous levels of total TMEM30B protein.
<b>Form</b>	Liquid
<b>Recommend Usage</b>	Western Blot (1:500-1:1000) ELISA (1:40000) The optimal working dilution should be determined by the end user.
<b>Storage Buffer</b>	In PBS, pH 7.4 (150mM NaCl, 0.02% sodium azide, 50% glycerol)
<b>Storage Instruction</b>	Store at -20°C. Aliquot to avoid repeated freezing and thawing.

**Note**

This product contains sodium azide: a POISONOUS AND HAZARDOUS SUBSTANCE which should be handled by trained staff only.

## Applications

- Western Blot (Cell lysate)

Western blot analysis of extracts from K-562 cells, using TMEM30B polyclonal antibody (Cat # PAB17496).  
Peptide "+" means "with peptide blocking".

- Enzyme-linked Immunoabsorbent Assay

## Gene Info — TMEM30B

Entrez GeneID	<a href="#">161291</a>
---------------	------------------------

Protein Accession#	<a href="#">Q3MIR4</a>
--------------------	------------------------

Gene Name	TMEM30B
-----------	---------

Gene Alias	CDC50B, MGC126775
------------	-------------------

Gene Description	transmembrane protein 30B
------------------	---------------------------

Omim ID	<a href="#">611029</a>
---------	------------------------

Gene Ontology	<a href="#">Hyperlink</a>
---------------	---------------------------

Other Designations	-
--------------------	---