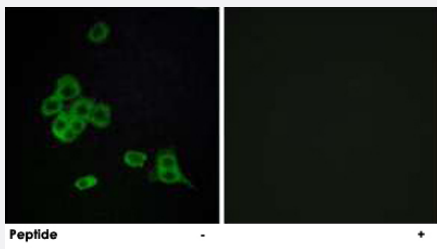


# CDH26 polyclonal antibody

Catalog # PAB17494      Size 100 ug

## Applications



### Immunofluorescence

Immunofluorescence analysis of MCF-7 cells, using CDH26 polyclonal antibody (Cat # PAB17494).

Peptide "+" means "with peptide blocking".

## Specification

**Product Description** Rabbit polyclonal antibody raised against synthetic peptide of CDH26.

**Immunogen** A synthetic peptide corresponding to internal of human CDH26.

**Host** Rabbit

**Reactivity** Human

**Specificity** This antibody detects endogenous levels of total CDH26 protein.

**Form** Liquid

**Recommend Usage** Immunofluorescence (1:500-1:1000)  
ELISA (1:5000)  
The optimal working dilution should be determined by the end user.

**Storage Buffer** In PBS, pH 7.4 (150mM NaCl, 0.02% sodium azide, 50% glycerol)

**Storage Instruction** Store at -20°C.  
Aliquot to avoid repeated freezing and thawing.

**Note** This product contains sodium azide: a POISONOUS AND HAZARDOUS SUBSTANCE which should be handled by trained staff only.

## Applications

- Immunofluorescence

Immunofluorescence analysis of MCF-7 cells, using CDH26 polyclonal antibody (Cat # PAB17494).  
Peptide "+" means "with peptide blocking".

- Enzyme-linked Immunoabsorbent Assay

## Gene Info — CDH26

Entrez GeneID	<a href="#">60437</a>
---------------	-----------------------

Protein Accession#	<a href="#">Q8IXH8</a>
--------------------	------------------------

Gene Name	CDH26
-----------	-------

Gene Alias	VR20
------------	------

Gene Description	cadherin-like 26
------------------	------------------

Gene Ontology	<a href="#">Hyperlink</a>
---------------	---------------------------

Gene Summary	Cadherins are a family of adhesion molecules that mediate Ca <sup>2+</sup> -dependent cell-cell adhesion in all solid tissues and modulate a wide variety of processes, including cell polarization and migration. Cadherin domains occur as repeats in the extracellular region and are thought to contribute to the sorting of heterogeneous cell types and the maintenance of orderly structures such as epithelium. This gene encodes a cadherin domain-containing protein whose specific function has not yet been determined. Alternative splicing occurs at this locus and two transcript variants, encoding distinct proteins, have been identified. [provided by RefSeq]
--------------	---

Other Designations	cadherin-like protein VR20
--------------------	----------------------------

## Publication Reference

- [Cadherin-26 \(CDH26\) regulates airway epithelial cell cytoskeletal structure and polarity.](#)

Lachowicz-Scroggins ME, Gordon ED, Wesolowska-Andersen A, Jackson ND, MacLeod HJ, Sharp LZ, Sun M, Seibold MA, Fahy JV.

Cell Discovery 2018 Feb; 4:7.

Application: IP, WB, Human, Human airway epithelial cells

## Disease

- [Asthma](#)
- [Genetic Predisposition to Disease](#)
- [Hypersensitivity](#)
- [Tobacco Use Disorder](#)