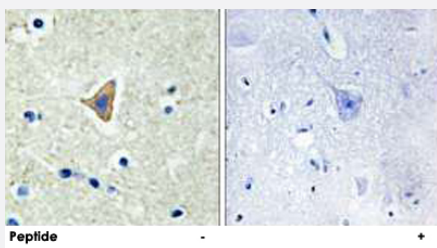


CDH20 polyclonal antibody

Catalog # PAB17492 Size 100 ug

Applications



Immunohistochemistry (Formalin/PFA-fixed paraffin-embedded sections)

Immunohistochemistry analysis of paraffin-embedded human brain tissue using CDH20 polyclonal antibody (Cat # PAB17492).

Peptide "+" means "with peptide blocking".



Immunofluorescence

Immunofluorescence analysis of NIH/3T3 cells, using CDH20 polyclonal antibody (Cat # PAB17492).

Peptide "+" means "with peptide blocking".

Specification

Product Description	Rabbit polyclonal antibody raised against synthetic peptide of CDH20.
Immunogen	A synthetic peptide corresponding to internal of human CDH20.
Host	Rabbit
Reactivity	Human, Mouse, Rat
Specificity	This antibody detects endogenous levels of total CDH20 protein.
Form	Liquid

Recommend Usage	Immunohistochemistry (1:50-1:100) Immunofluorescence (1:500-1:1000) ELISA (1:10000) The optimal working dilution should be determined by the end user.
Storage Buffer	In PBS, pH 7.4 (150mM NaCl, 0.02% sodium azide, 50% glycerol)
Storage Instruction	Store at -20°C. Aliquot to avoid repeated freezing and thawing.
Note	This product contains sodium azide: a POISONOUS AND HAZARDOUS SUBSTANCE which should be handled by trained staff only.

Applications

- Immunohistochemistry (Formalin/PFA-fixed paraffin-embedded sections)

Immunohistochemistry analysis of paraffin-embedded human brain tissue using CDH20 polyclonal antibody (Cat # PAB17492).
Peptide "+" means "with peptide blocking".

- Immunofluorescence

Immunofluorescence analysis of NIH/3T3 cells, using CDH20 polyclonal antibody (Cat # PAB17492).
Peptide "+" means "with peptide blocking".

- Enzyme-linked Immunoabsorbent Assay

Gene Info — CDH20

Entrez GeneID	28316
Protein Accession#	Q9HBT6
Gene Name	CDH20
Gene Alias	CDH7L3, Cdh7, FLJ37047
Gene Description	cadherin 20, type 2
Omim ID	605807
Gene Ontology	Hyperlink

Gene Summary

This gene is a type II classical cadherin from the cadherin superfamily and one of three cadherin 7-like genes located in a cluster on chromosome 18. The encoded membrane protein is a calcium dependent cell-cell adhesion glycoprotein comprised of five extracellular cadherin repeats, a trans membrane region and a highly conserved cytoplasmic tail. Type II (atypical) cadherins are defined based on their lack of a HAV cell adhesion recognition sequence specific to type I cadherins. Since disturbance of intracellular adhesion is a prerequisite for invasion and metastasis of tumor cells, cadherins are considered prime candidates for tumor suppressor genes. [provided by RefSeq]

Other Designations

-

Disease

- [Tobacco Use Disorder](#)