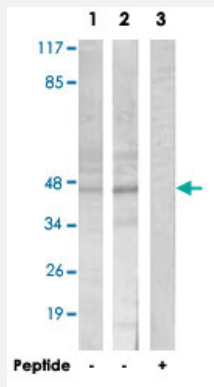


ARRDC3 polyclonal antibody

Catalog # PAB17489 Size 100 ug

Applications



Western Blot (Cell lysate)

Western blot analysis of extracts from Jurkat cells (Lane 1) and COLO 205 cells (Lane 2 and lane 3), using ARRDC3 polyclonal antibody (Cat # PAB17489).

Peptide "+" means "with peptide blocking".

Specification

Product Description	Rabbit polyclonal antibody raised against synthetic peptide of ARRDC3.
Immunogen	A synthetic peptide corresponding to C-terminus of human ARRDC3.
Host	Rabbit
Reactivity	Human, Mouse, Rat
Specificity	This antibody detects endogenous levels of total ARRDC3 protein
Form	Liquid
Recommend Usage	Western Blot (1:500-1:1000) ELISA (1:20000) The optimal working dilution should be determined by the end user.
Storage Buffer	In PBS, pH 7.4 (150mM NaCl, 0.02% sodium azide, 50% glycerol)
Storage Instruction	Store at -20°C. Aliquot to avoid repeated freezing and thawing.

Note

This product contains sodium azide: a POISONOUS AND HAZARDOUS SUBSTANCE which should be handled by trained staff only.

Applications

- Western Blot (Cell lysate)

Western blot analysis of extracts from Jurkat cells (Lane 1) and COLO 205 cells (Lane 2 and lane 3), using ARRDC3 polyclonal antibody (Cat # PAB17489).

Peptide "+" means "with peptide blocking".

- Enzyme-linked Immunoabsorbent Assay

Gene Info — ARRDC3

Entrez GeneID	57561
---------------	-----------------------

Protein Accession#	Q96B67
--------------------	------------------------

Gene Name	ARRDC3
-----------	--------

Gene Alias	KIAA1376, TLIMP
------------	-----------------

Gene Description	arrestin domain containing 3
------------------	------------------------------

Gene Ontology	Hyperlink
---------------	---------------------------

Other Designations	thioredoxin-binding protein-2-like inducible membrane
--------------------	---