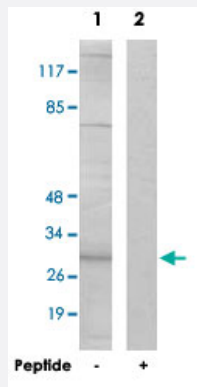


SPIN1 polyclonal antibody

Catalog # PAB17480

Size 100 ug

Applications



Western Blot (Cell lysate)

Western blot analysis of extracts from HeLa cells, using SPIN1 polyclonal antibody (Cat # PAB17480).

Peptide "+" means "with peptide blocking".

Specification

Product Description	Rabbit polyclonal antibody raised against synthetic peptide of SPIN1.
Immunogen	A synthetic peptide corresponding to internal of human SPIN1.
Host	Rabbit
Reactivity	Human, Mouse, Rat
Specificity	This antibody detects endogenous levels of total SPIN1 protein.
Form	Liquid
Recommend Usage	Western Blot (1:500-1:1000) ELISA (1:20000) The optimal working dilution should be determined by the end user.
Storage Buffer	In PBS, pH 7.4 (150mM NaCl, 0.02% sodium azide, 50% glycerol)
Storage Instruction	Store at -20°C. Aliquot to avoid repeated freezing and thawing.

Note

This product contains sodium azide: a POISONOUS AND HAZARDOUS SUBSTANCE which should be handled by trained staff only.

Applications

- Western Blot (Cell lysate)

Western blot analysis of extracts from HeLa cells, using SPIN1 polyclonal antibody (Cat # PAB17480).
Peptide "+" means "with peptide blocking".

- Enzyme-linked Immunoabsorbent Assay

Gene Info — SPIN1

Entrez GeneID	10927
---------------	-----------------------

Protein Accession#	Q9Y657
--------------------	------------------------

Gene Name	SPIN1
-----------	-------

Gene Alias	SPIN
------------	------

Gene Description	spindlin 1
------------------	------------

Omim ID	609936
---------	------------------------

Gene Ontology	Hyperlink
---------------	---------------------------

Other Designations	OTTHUMP00000021608 spindlin
--------------------	-----------------------------

Publication Reference

- [The functional landscape of Hsp27 reveals new cellular processes such as DNA repair and alternative splicing and proposes novel anticancer targets.](#)

Katsogiannou M, Andrieu C, Baylot V, Baudot A, Dusetti NJ, Gayet O, Finetti P, Garrido C, Birnbaum D, Bertucci F, Brun C, Rocchi P.

Molecular & Cellular Proteomics 2014 Dec; 13(12):3585.

Application: Co-IP, WB-Ce, Human, PC-3 cells