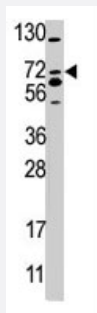


SMURF2 polyclonal antibody

Catalog # PAB1748

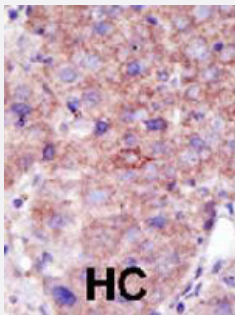
Size 400 uL

Applications



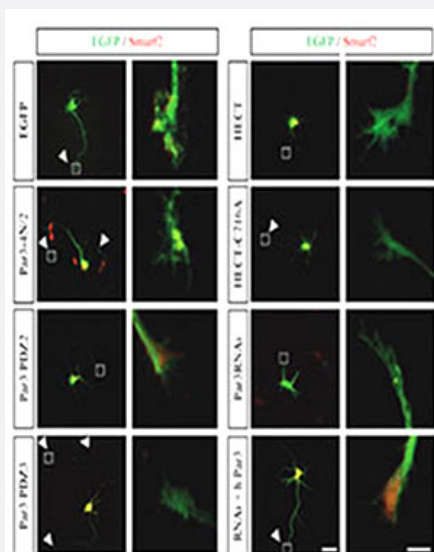
Western Blot (Cell lysate)

Western blot analysis of SMURF2 polyclonal antibody (Cat # PAB1748) in 293 cell line lysate (35 ug/lane). SMURF2 (arrow) was detected using the purified polyclonal antibody



Immunohistochemistry (Formalin/PFA-fixed paraffin-embedded sections)

Formalin-fixed and paraffin-embedded human hepatocellular carcinoma tissue reacted with SMURF2 polyclonal antibody (Cat # PAB1748), which was peroxidase-conjugated to the secondary antibody, followed by DAB staining. This data demonstrates the use of this antibody for immunohistochemistry; clinical relevance has not been evaluated. HC = hepatocarcinoma.



Immunofluorescence

Human hippocampal neurons were transfected 2 hrs after plating with expression vectors for EGFP, EGFP-tagged Par3-4N/2, Par3-PDZ2, Par3-PDZ3, Smurf2-HECT (HECT), SMURF2-HECT-C716A (HECT CA), and shRNA directed against mPar3 (Par3 RNAi), or vectors for the anti-Par3 shRNA and human Myc-Par3 (RNAi + h Par3)(green). Transfected cells were analyzed at 3 d.i.v. by staining with an SMURF2 polyclonal antibody (Cat # PAB1748) (red). Axons are marked by arrowheads. The marked growth cones are shown at a higher magnification. Scale bars, 40 and 10 μ m. (J. Biol. Chem. 2007 Nov 30;282(48):35259-35268)

Specification

Product Description	Rabbit polyclonal antibody raised against synthetic peptide of SMURF2.
Immunogen	A synthetic peptide (conjugated with KLH) corresponding to amino acids 702-731 of human SMURF 2.
Host	Rabbit
Reactivity	Human, Mouse
Form	Liquid
Recommend Usage	Immunofluorescence (1:10-1:50) Immunohistochemistry (Formalin/PFA-fixed paraffin-embedded sections) (1:50-100) Western Blot (1:1000) The optimal working dilution should be determined by the end user.
Storage Buffer	In PBS (0.09% sodium azide)
Storage Instruction	Store at 4°C. For long term storage store at -20°C. Aliquot to avoid repeated freezing and thawing.
Note	This product contains sodium azide: a POISONOUS AND HAZARDOUS SUBSTANCE which should be handled by trained staff only.

Applications

- Western Blot (Cell lysate)

Western blot analysis of SMURF2 polyclonal antibody (Cat # PAB1748) in 293 cell line lysate (35 ug/lane). SMURF2 (arrow) was detected using the purified polyclonal antibody

- Immunohistochemistry (Formalin/PFA-fixed paraffin-embedded sections)

Formalin-fixed and paraffin-embedded human hepatocellular carcinoma tissue reacted with SMURF2 polyclonal antibody (Cat # PAB1748), which was peroxidase-conjugated to the secondary antibody, followed by DAB staining. This data demonstrates the use of this antibody for immunohistochemistry; clinical relevance has not been evaluated. HC = hepatocarcinoma.

- Immunofluorescence

Human hippocampal neurons were transfected 2 hrs after plating with expression vectors for EGFP, EGFP-tagged Par3-4N/2, Par3-PDZ2, Par3-PDZ3, Smurf2-HECT (HECT), SMURF2-HECT-C716A (HECT CA), and shRNA directed against mPar3 (Par3 RNAi), or vectors for the anti-Par3 shRNA and human Myc-Par3 (RNAi + h Par3)(green). Transfected cells were analyzed at 3 d.i.v. by staining with an SMURF2 polyclonal antibody (Cat # PAB1748)(red). Axons are marked by arrowheads. The marked growth cones are shown at a higher magnification. Scale bars, 40 and 10 μ m.
(J. Biol. Chem. 2007 Nov 30;282(48):35259-35268)

Gene Info — SMURF2

Entrez GeneID	64750
Protein Accession#	Q9HAU4
Gene Name	SMURF2
Gene Alias	DKFZp686F0270, MGC138150
Gene Description	SMAD specific E3 ubiquitin protein ligase 2
Omim ID	605532
Gene Ontology	Hyperlink
Other Designations	E3 ubiquitin ligase SMURF2

Publication Reference

- [The interaction of mPar3 with the ubiquitin ligase Smurf2 is required for the establishment of neuronal polarity.](#)

Jens C Schwamborn, Mohammad R Khazaei, Andreas W Puschel.

The Journal of Biological Chemistry 2015 Jun; 290(25):15391.

Application: IF, WB-Ce, Rat, Rat embryos, Rat hippocampal neurons

Pathway

- [Endocytosis](#)
- [TGF-beta signaling pathway](#)
- [Ubiquitin mediated proteolysis](#)