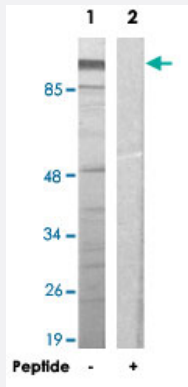


ZNF337 polyclonal antibody

Catalog # PAB17479 Size 100 ug

Applications



Western Blot (Cell lysate)

Western blot analysis of extracts from HeLa cells, using ZNF337 polyclonal antibody (Cat # PAB17479).

Peptide "+" means "with peptide blocking".

Specification

Product Description	Rabbit polyclonal antibody raised against synthetic peptide of ZNF337.
Immunogen	A synthetic peptide corresponding to internal of human ZNF337.
Host	Rabbit
Reactivity	Human
Specificity	This antibody detects endogenous levels of total ZNF337 protein.
Form	Liquid
Recommend Usage	Western Blot (1:500-1:1000) ELISA (1:20000) The optimal working dilution should be determined by the end user.
Storage Buffer	In PBS, pH 7.4 (150mM NaCl, 0.02% sodium azide, 50% glycerol)
Storage Instruction	Store at -20°C. Aliquot to avoid repeated freezing and thawing.

Note

This product contains sodium azide: a POISONOUS AND HAZARDOUS SUBSTANCE which should be handled by trained staff only.

Applications

- Western Blot (Cell lysate)

Western blot analysis of extracts from HeLa cells, using ZNF337 polyclonal antibody (Cat # PAB17479).

Peptide "+" means "with peptide blocking".

- Enzyme-linked Immunoabsorbent Assay

Gene Info — ZNF337

Entrez GeneID	26152
---------------	-----------------------

Protein Accession#	Q9Y3M9
--------------------	------------------------

Gene Name	ZNF337
-----------	--------

Gene Alias	-
------------	---

Gene Description	zinc finger protein 337
------------------	-------------------------

Gene Ontology	Hyperlink
---------------	---------------------------

Other Designations	OTTHUMP00000030501 OTTHUMP00000030502
--------------------	---------------------------------------