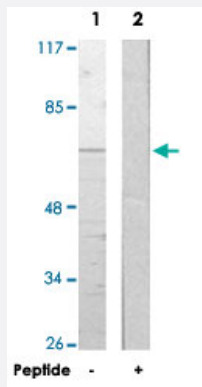


EIF3L polyclonal antibody

Catalog # PAB17471

Size 100 ug

Applications



Western Blot (Cell lysate)

Western blot analysis of extracts from HUVEC cells, using EIF3L polyclonal antibody (Cat # PAB17471).

Peptide "+" means "with peptide blocking".

Specification

Product Description	Rabbit polyclonal antibody raised against synthetic peptide of EIF3L.
Immunogen	A synthetic peptide corresponding to N-terminus of human EIF3L.
Host	Rabbit
Reactivity	Human, Mouse
Specificity	This antibody detects endogenous levels of total EIF3L protein.
Form	Liquid
Recommend Usage	Western Blot (1:500-1:1000) ELISA (1:5000) The optimal working dilution should be determined by the end user.
Storage Buffer	In PBS, pH 7.4 (150mM NaCl, 0.02% sodium azide, 50% glycerol)
Storage Instruction	Store at -20°C. Aliquot to avoid repeated freezing and thawing.

Note

This product contains sodium azide: a POISONOUS AND HAZARDOUS SUBSTANCE which should be handled by trained staff only.

Applications

- Western Blot (Cell lysate)

Western blot analysis of extracts from HUVEC cells, using EIF3L polyclonal antibody (Cat # PAB17471).

Peptide "+" means "with peptide blocking".

- Enzyme-linked Immunoabsorbent Assay

Gene Info — EIF3L

Entrez GeneID	51386
---------------	-----------------------

Protein Accession#	Q9Y262
--------------------	------------------------

Gene Name	EIF3L
-----------	-------

Gene Alias	EIF3EIP, EIF3S11, EIF3S6IP, HSPC021, HSPC025, MSTP005
------------	---

Gene Description	eukaryotic translation initiation factor 3, subunit L
------------------	---

Gene Ontology	Hyperlink
---------------	---------------------------

Gene Summary	O
--------------	---

Other Designations	OTTHUMP00000028693 eEIF associated protein HSPC021 eukaryotic translation initiation factor 3 subunit 6 interacting protein eukaryotic translation initiation factor 3, subunit 6 interacting protein eukaryotic translation initiation factor 3, subunit E int
--------------------	---