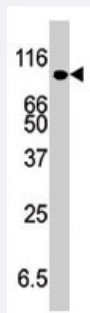


SMURF1 polyclonal antibody

Catalog # PAB1747

Size 400 uL

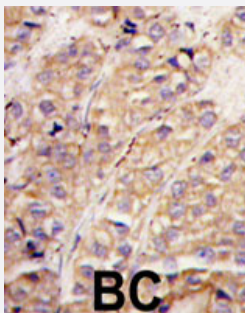
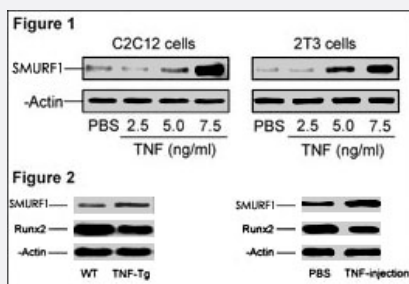
Applications



Western Blot (Tissue lysate)

Western blot analysis of SMURF1 polyclonal antibody (Cat # PAB1747) in mouse kidney tissue lysate (35 ug/lane). SMURF1 (arrow) was detected using the purified polyclonal antibody.

Western Blot



Immunohistochemistry (Formalin/PFA-fixed paraffin-embedded sections)

Formalin-fixed and paraffin-embedded human breast carcinoma tissue reacted with SMURF1 polyclonal antibody (Cat # PAB1747) , which was peroxidase-conjugated to the secondary antibody, followed by DAB staining. This data demonstrates the use of this antibody for immunohistochemistry; clinical relevance has not been evaluated.

Specification

Product Description	Rabbit polyclonal antibody raised against synthetic peptide of SMURF1.
Immunogen	A synthetic peptide (conjugated with KLH) corresponding to N-terminus of human SMURF1.
Host	Rabbit
Reactivity	Human, Mouse
Form	Liquid
Purification	Protein G purification
Recommend Usage	Western Blot (1:1000) Immunohistochemistry (1:50-100) The optimal working dilution should be determined by the end user.
Storage Buffer	In PBS (0.09% sodium azide)
Storage Instruction	Store at 4°C. For long term storage store at -20°C. Aliquot to avoid repeated freezing and thawing.
Note	This product contains sodium azide: a POISONOUS AND HAZARDOUS SUBSTANCE which should be handled by trained staff only.

Applications

- Western Blot (Tissue lysate)

Western blot analysis of SMURF1 polyclonal antibody (Cat # PAB1747) in mouse kidney tissue lysate (35 ug/lane). SMURF1 (arrow) was detected using the purified polyclonal antibody.

- Western Blot

Figure 1. C2C12 or 2T3 cells were treated with PBS or TNF (2.5-7.5 ng/mL) for 72 h. SMURF1 and beta-actin protein levels were detected by Western blot SMURF1 polyclonal antibody (Cat # PAB1747).

Figure 2. Proteins were extracted from the metaphyseal region of 4-month-old TNF-over-expressing mice (TNF-Tg) and wild type (wt) littermates (left panel). PBS or TNF was injected (0.25 ug/injection, 3 times/day for 3 days) into the calvarial bones of wt mice. Proteins were extracted from the bones and analyzed by Western blotting for SMURF1 polyclonal antibody (Cat # PAB1747), Runx2 and beta-actin protein levels (right panel).

- Immunohistochemistry (Formalin/PFA-fixed paraffin-embedded sections)

Formalin-fixed and paraffin-embedded human breast carcinoma tissue reacted with SMURF1 polyclonal antibody (Cat # PAB1747), which was peroxidase-conjugated to the secondary antibody, followed by DAB staining. This data demonstrates the use of this antibody for immunohistochemistry; clinical relevance has not been evaluated.

Gene Info — SMURF1

Entrez GeneID [57154](#)

Protein Accession# [NP_065162:Q9HCE7](#)

Gene Name SMURF1

Gene Alias KIAA1625

Gene Description SMAD specific E3 ubiquitin protein ligase 1

Omim ID [605568](#)

Gene Ontology [Hyperlink](#)

Gene Summary This gene encodes a ubiquitin ligase that is specific for receptor-regulated SMAD proteins in the bone morphogenetic protein (BMP) pathway. A similar protein in Xenopus is involved in embryonic pattern formation. Alternative splicing results in multiple transcript variants encoding different isoforms. An additional transcript variant has been identified, but its full length sequence has not been determined. [provided by RefSeq]

Other Designations E3 ubiquitin ligase SMURF1|Smad ubiquitination regulatory factor 1|Smad-specific E3 ubiquitin ligase 1

Publication Reference

- [Tumor necrosis factor promotes Runx2 degradation through up-regulation of Smurf1 and Smurf2 in osteoblasts.](#)

Kaneki H, Guo R, Chen D, Yao Z, Schwarz EM, Zhang YE, Boyce BF, Xing L.

The Journal of Biological Chemistry 2005 Dec; 281(7):4326.

Pathway

- [Endocytosis](#)
- [TGF-beta signaling pathway](#)
- [Ubiquitin mediated proteolysis](#)