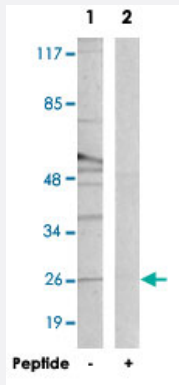


# CREBZF polyclonal antibody

Catalog # PAB17459      Size 100 ug

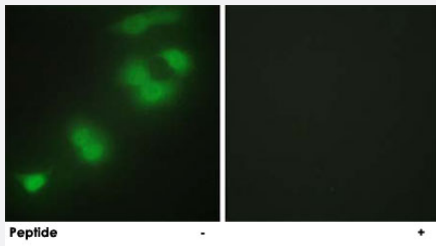
## Applications



### Western Blot (Cell lysate)

Western blot analysis of extracts from Raw 264.7 cells, using CREBZF polyclonal antibody (Cat # PAB17459).

Peptide "+" means "with peptide blocking".



### Immunofluorescence

Immunofluorescence analysis of HepG2 cells, using CREBZF polyclonal antibody (Cat # PAB17459).

Peptide "+" means "with peptide blocking".

## Specification

<b>Product Description</b>	Rabbit polyclonal antibody raised against synthetic peptide of CREBZF.
<b>Immunogen</b>	A synthetic peptide corresponding to internal of human CREBZF.
<b>Sequence</b>	NQELRAENRELGKR
<b>Host</b>	Rabbit
<b>Reactivity</b>	Human, Mouse
<b>Specificity</b>	This antibody detects endogenous levels of total CREBZF protein.

Form	Liquid
Recommend Usage	Western Blot (1:500-1:1000) Immunofluorescence (1:500-1:1000) ELISA (1:5000) The optimal working dilution should be determined by the end user.
Storage Buffer	In PBS, pH 7.4 (150mM NaCl, 0.02% sodium azide, 50% glycerol)
Storage Instruction	Store at -20°C. Aliquot to avoid repeated freezing and thawing.
Note	This product contains sodium azide: a POISONOUS AND HAZARDOUS SUBSTANCE which should be handled by trained staff only.

## Applications

- Western Blot (Cell lysate)

Western blot analysis of extracts from Raw 264.7 cells, using CREBZF polyclonal antibody (Cat # PAB17459).  
Peptide "+" means "with peptide blocking".

- Immunofluorescence

Immunofluorescence analysis of HepG2 cells, using CREBZF polyclonal antibody (Cat # PAB17459).  
Peptide "+" means "with peptide blocking".

- Enzyme-linked Immunoabsorbent Assay

## Gene Info — CREBZF

Entrez GeneID	<a href="#">58487</a>
Protein Accession#	<a href="#">Q9NS37</a>
Gene Name	CREBZF
Gene Alias	ZF
Gene Description	CREB/ATF bZIP transcription factor
Omim ID	<a href="#">606444</a>
Gene Ontology	<a href="#">Hyperlink</a>
Other Designations	HCF-binding transcription factor Zhangfei Zhangfei