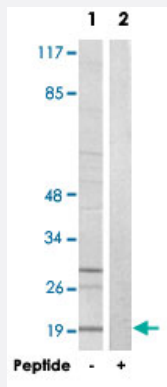


PBOV1 polyclonal antibody

Catalog # PAB17448

Size 100 ug

Applications



Western Blot (Cell lysate)

Western blot analysis of extracts from K-562 cells, using PBOV1 polyclonal antibody (Cat # PAB17448).

Peptide "+" means "with peptide blocking".

Specification

Product Description	Rabbit polyclonal antibody raised against synthetic peptide of PBOV1.
Immunogen	A synthetic peptide corresponding to internal of human PBOV1.
Host	Rabbit
Reactivity	Human
Specificity	This antibody detects endogenous levels of total PBOV1 protein.
Form	Liquid
Recommend Usage	Western Blot (1:500-1:1000) ELISA (1:40000) The optimal working dilution should be determined by the end user.
Storage Buffer	In PBS, pH 7.4 (150mM NaCl, 0.02% sodium azide, 50% glycerol)
Storage Instruction	Store at -20°C. Aliquot to avoid repeated freezing and thawing.

Note

This product contains sodium azide: a POISONOUS AND HAZARDOUS SUBSTANCE which should be handled by trained staff only.

Applications

- Western Blot (Cell lysate)

Western blot analysis of extracts from K-562 cells, using PBOV1 polyclonal antibody (Cat # PAB17448).
Peptide "+" means "with peptide blocking".

- Enzyme-linked Immunoabsorbent Assay

Gene Info — PBOV1

Entrez GeneID [59351](#)

Protein Accession# [Q9GZY1](#)

Gene Name PBOV1

Gene Alias UC28, UROC28, dJ171N11.2

Gene Description prostate and breast cancer overexpressed 1

Omim ID [605669](#)

Gene Ontology [Hyperlink](#)

Other Designations OTTHUMP00000017294

Disease

- [Breast Neoplasms](#)
- [Genetic Predisposition to Disease](#)