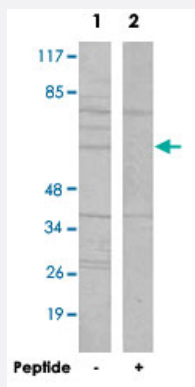


YTHDF1 polyclonal antibody

Catalog # PAB17446

Size 100 ug

Applications



Western Blot (Cell lysate)

Western blot analysis of extracts from 293 cells, using YTHDF1 polyclonal antibody (Cat # PAB17446).

Peptide "+" means "with peptide blocking".

Specification

Product Description Rabbit polyclonal antibody raised against synthetic peptide of YTHDF1.

Immunogen A synthetic peptide corresponding to N-terminus of human YTHDF1.

Host Rabbit

Reactivity Human, Mouse, Rat

Specificity This antibody detects endogenous levels of total YTHDF1 protein.

Form Liquid

Recommend Usage Western Blot (1:500-1:1000)
ELISA (1:10000)
The optimal working dilution should be determined by the end user.

Storage Buffer In PBS, pH 7.4 (150mM NaCl, 0.02% sodium azide, 50% glycerol)

Storage Instruction Store at -20°C.
Aliquot to avoid repeated freezing and thawing.

Note

This product contains sodium azide: a POISONOUS AND HAZARDOUS SUBSTANCE which should be handled by trained staff only.

Applications

- Western Blot (Cell lysate)

Western blot analysis of extracts from 293 cells, using YTHDF1 polyclonal antibody (Cat # PAB17446).
Peptide "+" means "with peptide blocking".

- Enzyme-linked Immunoabsorbent Assay

Gene Info — YTHDF1

Entrez GeneID	54915
---------------	-----------------------

Protein Accession#	Q9BYJ9
--------------------	------------------------

Gene Name	YTHDF1
-----------	--------

Gene Alias	C20orf21, FLJ20391
------------	--------------------

Gene Description	YTH domain family, member 1
------------------	-----------------------------

Gene Ontology	Hyperlink
---------------	---------------------------

Gene Summary	O
--------------	---

Other Designations	OTTHUMP00000031533 YTH domain family 1
--------------------	--