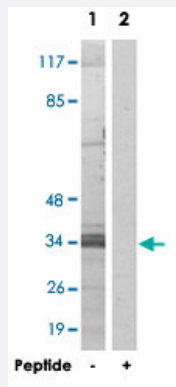


C1orf35 polyclonal antibody

Catalog # PAB17442

Size 100 ug

Applications



Western Blot (Cell lysate)

Western blot analysis of extracts from K-562 cells, using C1orf35 polyclonal antibody (Cat # PAB17442).

Peptide "+" means "with peptide blocking".

Specification

Product Description Rabbit polyclonal antibody raised against synthetic peptide of C1orf35.

Immunogen A synthetic peptide corresponding to N-terminus of human C1orf35.

Host Rabbit

Reactivity Human, Mouse, Rat

Specificity This antibody detects endogenous levels of total C1orf35 protein.

Form Liquid

Recommend Usage Western Blot (1:500-1:1000)
ELISA (1:10000)
The optimal working dilution should be determined by the end user.

Storage Buffer In PBS, pH 7.4 (150mM NaCl, 0.02% sodium azide, 50% glycerol)

Storage Instruction Store at -20°C.
Aliquot to avoid repeated freezing and thawing.

Note

This product contains sodium azide: a POISONOUS AND HAZARDOUS SUBSTANCE which should be handled by trained staff only.

Applications

- Western Blot (Cell lysate)

Western blot analysis of extracts from K-562 cells, using C1orf35 polyclonal antibody (Cat # PAB17442).

Peptide "+" means "with peptide blocking".

- Enzyme-linked Immunoabsorbent Assay

Gene Info — C1orf35

Entrez GeneID	79169
---------------	-----------------------

Protein Accession#	Q9BU76
--------------------	------------------------

Gene Name	C1orf35
-----------	---------

Gene Alias	MGC4174, MMTAG2
------------	-----------------

Gene Description	chromosome 1 open reading frame 35
------------------	------------------------------------

Gene Ontology	Hyperlink
---------------	---------------------------

Other Designations	OTTHUMP00000035918 hypothetical protein LOC79169 multiple myeloma transforming 2
--------------------	--