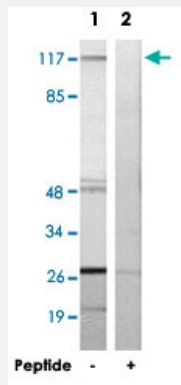


RPS6KC1 polyclonal antibody

Catalog # PAB17438 Size 100 ug

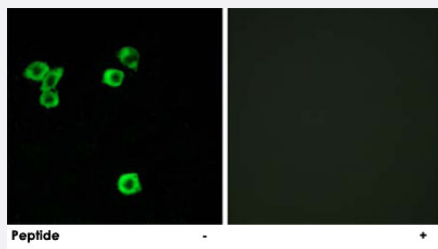
Applications



Western Blot (Cell lysate)

Western blot analysis of extracts from K-562 cells, using RPS6KC1 polyclonal antibody (Cat # PAB17438).

Peptide "+" means "with peptide blocking".



Immunofluorescence

Immunofluorescence analysis of LoVo cells, using RPS6KC1 polyclonal antibody (Cat # PAB17438).

Peptide "+" means "with peptide blocking".

Specification

Product Description	Rabbit polyclonal antibody raised against synthetic peptide of RPS6KC1.
Immunogen	A synthetic peptide corresponding to internal of human RPS6KC1.
Host	Rabbit
Reactivity	Human, Mouse
Specificity	This antibody detects endogenous levels of total RPS6KC1 protein.
Form	Liquid

Recommend Usage	Western Blot (1:500-1:1000) Immunofluorescence (1:500-1:1000) ELISA (1:20000) The optimal working dilution should be determined by the end user.
Storage Buffer	In PBS, pH 7.4 (150mM NaCl, 0.02% sodium azide, 50% glycerol)
Storage Instruction	Store at -20°C. Aliquot to avoid repeated freezing and thawing.
Note	This product contains sodium azide: a POISONOUS AND HAZARDOUS SUBSTANCE which should be handled by trained staff only.

Applications

- Western Blot (Cell lysate)

Western blot analysis of extracts from K-562 cells, using RPS6KC1 polyclonal antibody (Cat # PAB17438).
Peptide "+" means "with peptide blocking".

- Immunofluorescence

Immunofluorescence analysis of LoVo cells, using RPS6KC1 polyclonal antibody (Cat # PAB17438).
Peptide "+" means "with peptide blocking".

- Enzyme-linked Immunoabsorbent Assay

Gene Info — RPS6KC1

Entrez GeneID	26750
Protein Accession#	Q96S38
Gene Name	RPS6KC1
Gene Alias	RPK118, humS6PKh1
Gene Description	ribosomal protein S6 kinase, 52kDa, polypeptide 1
Gene Ontology	Hyperlink
Gene Summary	52kDa
Other Designations	OTTHUMP00000035018 ribosomal protein S6 kinase, 52kD, polypeptide 1