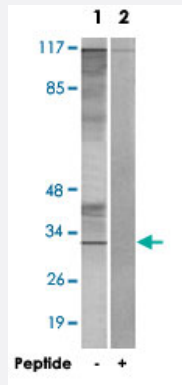


CIB3 polyclonal antibody

Catalog # PAB17437 Size 100 ug

Applications



Western Blot (Cell lysate)

Western blot analysis of extracts from K-562 cells, using CIB3 polyclonal antibody (Cat # PAB17437).

Peptide "+" means "with peptide blocking".

Specification

Product Description	Rabbit polyclonal antibody raised against synthetic peptide of CIB3.
Immunogen	A synthetic peptide corresponding to C-terminus of human CIB3.
Host	Rabbit
Reactivity	Human, Mouse
Specificity	This antibody detects endogenous levels of total CIB3 protein.
Form	Liquid
Recommend Usage	Western Blot (1:500-1:1000) ELISA (1:20000) The optimal working dilution should be determined by the end user.
Storage Buffer	In PBS, pH 7.4 (150mM NaCl, 0.02% sodium azide, 50% glycerol)
Storage Instruction	Store at -20°C. Aliquot to avoid repeated freezing and thawing.

Note

This product contains sodium azide: a POISONOUS AND HAZARDOUS SUBSTANCE which should be handled by trained staff only.

Applications

- Western Blot (Cell lysate)

Western blot analysis of extracts from K-562 cells, using CIB3 polyclonal antibody (Cat # PAB17437).
Peptide "+" means "with peptide blocking".

- Enzyme-linked Immunoabsorbent Assay

Gene Info — CIB3

Entrez GeneID [117286](#)

Protein Accession# [Q96Q77](#)

Gene Name CIB3

Gene Alias KIP3, MGC138405, MGC142151, MGC96922

Gene Description calcium and integrin binding family member 3

Omim ID [610645](#)

Gene Ontology [Hyperlink](#)

Gene Summary This gene product shares a high degree of sequence similarity with DNA-dependent protein kinase catalytic subunit-interacting protein 2 in human and mouse, and like them may bind the catalytic subunit of DNA-dependent protein kinases. The exact function of this gene is not known. [provided by RefSeq]

Other Designations DNA-dependent protein kinase catalytic subunit-interacting protein 3

Disease

- [Kidney Failure](#)