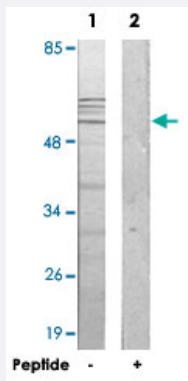


# IP6K3 polyclonal antibody

Catalog # PAB17434

Size 100 ug

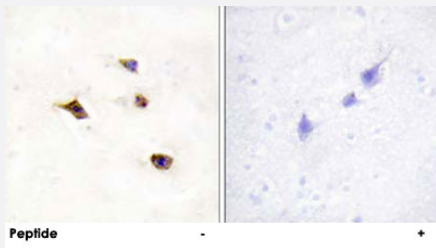
## Applications



### Western Blot (Cell lysate)

Western blot analysis of extracts from 293 cells, using IP6K3 polyclonal antibody (Cat # PAB17434).

Peptide "+" means "with peptide blocking".



### Immunohistochemistry (Formalin/PFA-fixed paraffin-embedded sections)

Immunohistochemistry analysis of paraffin-embedded human brain tissue using IP6K3 polyclonal antibody (Cat # PAB17434).

Peptide "+" means "with peptide blocking".

## Specification

Product Description	Rabbit polyclonal antibody raised against synthetic peptide of IP6K3.
Immunogen	A synthetic peptide corresponding to internal of human IP6K3.
Host	Rabbit
Reactivity	Human, Mouse
Specificity	This antibody detects endogenous levels of total IP6K3 protein.
Form	Liquid

<b>Recommend Usage</b>	Western Blot (1:500-1:1000) Immunohistochemistry (1:50-1:100) ELISA (1:20000) The optimal working dilution should be determined by the end user.
<b>Storage Buffer</b>	In PBS, pH 7.4 (150mM NaCl, 0.02% sodium azide, 50% glycerol)
<b>Storage Instruction</b>	Store at -20°C. Aliquot to avoid repeated freezing and thawing.
<b>Note</b>	This product contains sodium azide: a POISONOUS AND HAZARDOUS SUBSTANCE which should be handled by trained staff only.

## Applications

- Western Blot (Cell lysate)

Western blot analysis of extracts from 293 cells, using IP6K3 polyclonal antibody (Cat # PAB17434).  
Peptide "+" means "with peptide blocking".

- Immunohistochemistry (Formalin/PFA-fixed paraffin-embedded sections)

Immunohistochemistry analysis of paraffin-embedded human brain tissue using IP6K3 polyclonal antibody (Cat # PAB17434).  
Peptide "+" means "with peptide blocking".

- Enzyme-linked Immunoabsorbent Assay

## Gene Info — IP6K3

<b>Entrez GeneID</b>	<a href="#">117283</a>
<b>Protein Accession#</b>	<a href="#">Q96PC2</a>
<b>Gene Name</b>	IP6K3
<b>Gene Alias</b>	IHPK3, INSP6K3, MGC102928
<b>Gene Description</b>	inositol hexakisphosphate kinase 3
<b>Omim ID</b>	<a href="#">606993</a>
<b>Gene Ontology</b>	<a href="#">Hyperlink</a>
<b>Gene Summary</b>	This gene encodes a protein that belongs to the inositol phosphokinase (IPK) family. This protein is likely responsible for the conversion of inositol hexakisphosphate (InsP6) to diphosphoinositol pentakisphosphate (InsP7/PP-InsP5). It may also convert 1,3,4,5,6-pentakisphosphate (InsP5) to P-P-InsP4. Alternative splicing results in multiple transcript variants encoding the same protein

**Other Designations**

ATP:1D-myo-inositol-hexakisphosphate phosphotransferase|InsP6 kinase 3|OTTHUMP00000016212|inositol hexaphosphate kinase 3

---

**Disease**

- [Genetic Predisposition to Disease](#)
- [Lupus Erythematosus](#)