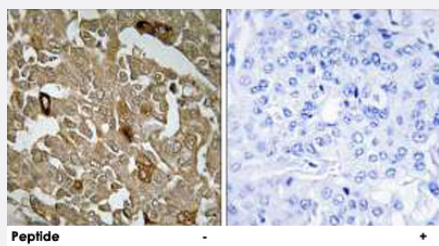


BTBD6 polyclonal antibody

Catalog # PAB17432 Size 100 ug

Applications



Immunohistochemistry (Formalin/PFA-fixed paraffin-embedded sections)

Immunohistochemistry analysis of paraffin-embedded human breast carcinoma tissue, using BTBD6 polyclonal antibody (Cat # PAB17432).

Peptide "+" means "with peptide blocking".

Specification

Product Description Rabbit polyclonal antibody raised against synthetic peptide of BTBD6.

Immunogen A synthetic peptide corresponding to internal of human BTBD6.

Host Rabbit

Reactivity Human, Mouse

Specificity This antibody detects endogenous levels of total BTBD6 protein.

Form Liquid

Recommend Usage Immunohistochemistry (1:50-1:100)
ELISA (1:12000)
The optimal working dilution should be determined by the end user.

Storage Buffer In PBS, pH 7.4 (150mM NaCl, 0.02% sodium azide, 50% glycerol)

Storage Instruction Store at -20°C.
Aliquot to avoid repeated freezing and thawing.

Note This product contains sodium azide: a POISONOUS AND HAZARDOUS SUBSTANCE which should be handled by trained staff only.

Applications

- Immunohistochemistry (Formalin/PFA-fixed paraffin-embedded sections)

Immunohistochemistry analysis of paraffin-embedded human breast carcinoma tissue, using BTBD6 polyclonal antibody (Cat # PAB17432).

Peptide "+" means "with peptide blocking".

- Enzyme-linked Immunoabsorbent Assay

Gene Info — BTBD6

Entrez GeneID	90135
Protein Accession#	Q96KE9
Gene Name	BTBD6
Gene Alias	BDPL
Gene Description	BTB (POZ) domain containing 6
Gene Ontology	Hyperlink
Other Designations	BTB domain protein BDPL OTTHUMP00000163908 glucocorticoid receptor AF-1 coactivator-1 ens BTB