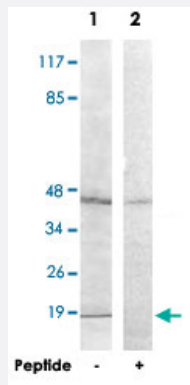


HIST1H2BH polyclonal antibody

Catalog # PAB17428

Size 100 ug

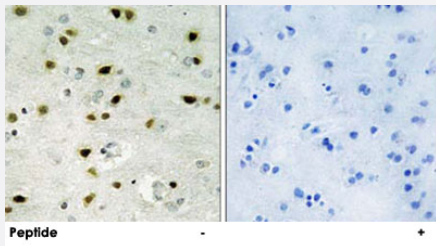
Applications



Western Blot (Cell lysate)

Western blot analysis of extracts from A-549 cells, using HIST1H2BH polyclonal antibody (Cat # PAB17428).

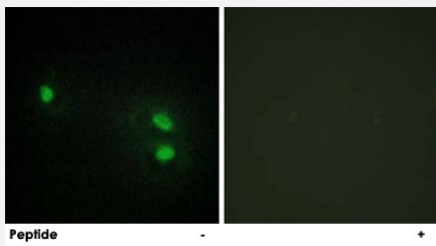
Peptide "+" means "with peptide blocking".



Immunohistochemistry (Formalin/PFA-fixed paraffin-embedded sections)

Immunohistochemistry analysis of paraffin-embedded human brain tissue using HIST1H2BH polyclonal antibody (Cat # PAB17428).

Peptide "+" means "with peptide blocking".



Immunofluorescence

Immunofluorescence analysis of HeLa cells, using HIST1H2BH polyclonal antibody (Cat # PAB17428).

Peptide "+" means "with peptide blocking".

Specification

Product Description

Rabbit polyclonal antibody raised against synthetic peptide of HIST1H2BH.

Immunogen	A synthetic peptide corresponding to internal of human HIST1H2BH.
Host	Rabbit
Reactivity	Human, Mouse
Specificity	This antibody detects endogenous levels of total HIST1H2BH protein.
Form	Liquid
Recommend Usage	Western Blot (1:500-1:1000) Immunohistochemistry (1:50-1:100) Immunofluorescence (1:500-1:1000) ELISA (1:5000) The optimal working dilution should be determined by the end user.
Storage Buffer	In PBS, pH 7.4 (150mM NaCl, 0.02% sodium azide, 50% glycerol)
Storage Instruction	Store at -20°C. Aliquot to avoid repeated freezing and thawing.
Note	This product contains sodium azide: a POISONOUS AND HAZARDOUS SUBSTANCE which should be handled by trained staff only.

Applications

- Western Blot (Cell lysate)

Western blot analysis of extracts from A-549 cells, using HIST1H2BH polyclonal antibody (Cat # PAB17428).
Peptide "+" means "with peptide blocking".

- Immunohistochemistry (Formalin/PFA-fixed paraffin-embedded sections)

Immunohistochemistry analysis of paraffin-embedded human brain tissue using HIST1H2BH polyclonal antibody (Cat # PAB17428).
Peptide "+" means "with peptide blocking".

- Immunofluorescence

Immunofluorescence analysis of HeLa cells, using HIST1H2BH polyclonal antibody (Cat # PAB17428).
Peptide "+" means "with peptide blocking".

- Enzyme-linked Immunoabsorbent Assay

Gene Info — HIST1H2BH

Entrez GeneID

[8345](#)

Protein Accession#	Q93079
Gene Name	HIST1H2BH
Gene Alias	H2B/j, H2BFJ
Gene Description	histone cluster 1, H2bh
Omim ID	602806
Gene Ontology	Hyperlink
Gene Summary	<p>Histones are basic nuclear proteins that are responsible for the nucleosome structure of the chromosomal fiber in eukaryotes. Two molecules of each of the four core histones (H2A, H2B, H3, and H4) form an octamer, around which approximately 146 bp of DNA is wrapped in repeating units, called nucleosomes. The linker histone, H1, interacts with linker DNA between nucleosomes and functions in the compaction of chromatin into higher order structures. This gene is intronless and encodes a member of the histone H2B family. Transcripts from this gene lack polyA tails but instead contain a palindromic termination element. This gene is found in the large histone gene cluster on chromosome 6. [provided by RefSeq]</p>
Other Designations	H2B histone family, member J histone 1, H2bh

Pathway

- [Systemic lupus erythematosus](#)