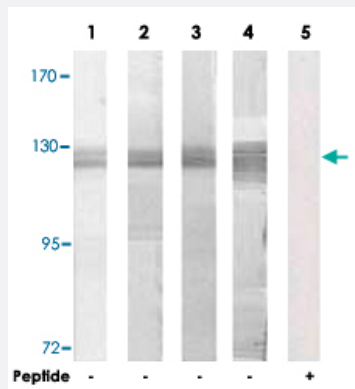


SMG7 polyclonal antibody

Catalog # PAB17426 Size 100 ug

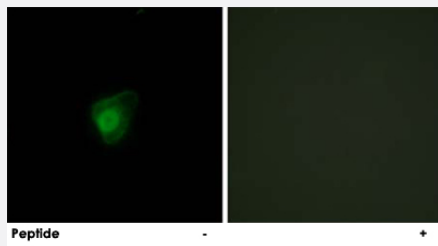
Applications



Western Blot (Cell lysate)

Western blot analysis of extracts from HeLa cells (Lane 1), Jurkat cells (Lane 2), 293 cells (Lane 3) and HUVEC cells (Lane 4 and lane 5), using SMG7 polyclonal antibody (Cat # PAB17426).

Peptide "+" means "with peptide blocking".



Immunofluorescence

Immunofluorescence analysis of HepG2 cells, using SMG7 polyclonal antibody (Cat # PAB17426).

Peptide "+" means "with peptide blocking".

Specification

Product Description	Rabbit polyclonal antibody raised against synthetic peptide of SMG7.
Immunogen	A synthetic peptide corresponding to internal of human SMG7.
Host	Rabbit
Reactivity	Human
Specificity	This antibody detects endogenous levels of total SMG7 protein.
Form	Liquid

Recommend Usage	Western Blot (1:500-1:1000) Immunofluorescence (1:500-1:1000) ELISA (1:5000) The optimal working dilution should be determined by the end user.
Storage Buffer	In PBS, pH 7.4 (150mM NaCl, 0.02% sodium azide, 50% glycerol)
Storage Instruction	Store at -20°C. Aliquot to avoid repeated freezing and thawing.
Note	This product contains sodium azide: a POISONOUS AND HAZARDOUS SUBSTANCE which should be handled by trained staff only.

Applications

- Western Blot (Cell lysate)

Western blot analysis of extracts from HeLa cells (Lane 1), Jurkat cells (Lane 2), 293 cells (Lane 3) and HUVEC cells (Lane 4 and lane 5), using SMG7 polyclonal antibody (Cat # PAB17426).
Peptide "+" means "with peptide blocking".

- Immunofluorescence

Immunofluorescence analysis of HepG2 cells, using SMG7 polyclonal antibody (Cat # PAB17426).
Peptide "+" means "with peptide blocking".

- Enzyme-linked Immunoabsorbent Assay

Gene Info — SMG7

Entrez GeneID	9887
Protein Accession#	Q92540
Gene Name	SMG7
Gene Alias	C1orf16, EST1C, FLJ23717, KIAA0250, SGA56M, SMG-7
Gene Description	Smg-7 homolog, nonsense mediated mRNA decay factor (C. elegans)
Omim ID	610964
Gene Ontology	Hyperlink
Gene Summary	SMG7 is involved in nonsense-mediated mRNA decay (Fukuhara et al., 2005 [PubMed 15721257]).[supplied by OMIM]

Other Designations

EST1 telomerase component homolog C|OTTHUMP00000033244|SMG-7 homolog|breast cancer-associated antigen SGA-56M|ever shorter telomeres 1C
