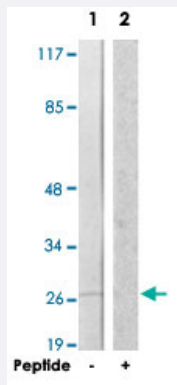


# BRI3BP polyclonal antibody

Catalog # PAB17424

Size 100 ug

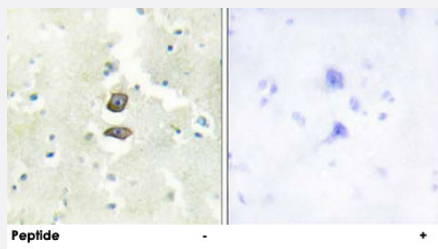
## Applications



### Western Blot (Cell lysate)

Western blot analysis of extracts from Raw 264.7 cells, using BRI3BP polyclonal antibody (Cat # PAB17424).

Peptide "+" means "with peptide blocking".



### Immunohistochemistry (Formalin/PFA-fixed paraffin-embedded sections)

Immunohistochemistry analysis of paraffin-embedded human brain tissue using BRI3BP polyclonal antibody (Cat # PAB17424).

Peptide "+" means "with peptide blocking".

## Specification

Product Description	Rabbit polyclonal antibody raised against synthetic peptide of BRI3BP.
Immunogen	A synthetic peptide corresponding to internal of human BRI3BP.
Host	Rabbit
Reactivity	Human, Mouse
Specificity	This antibody detects endogenous levels of total BRI3BP protein
Form	Liquid

<b>Recommend Usage</b>	Western Blot (1:500-1:1000) Immunohistochemistry (1:50-1:100) ELISA (1:20000) The optimal working dilution should be determined by the end user.
<b>Storage Buffer</b>	In PBS, pH 7.4 (150mM NaCl, 0.02% sodium azide, 50% glycerol)
<b>Storage Instruction</b>	Store at -20°C. Aliquot to avoid repeated freezing and thawing.
<b>Note</b>	This product contains sodium azide: a POISONOUS AND HAZARDOUS SUBSTANCE which should be handled by trained staff only.

## Applications

- Western Blot (Cell lysate)

Western blot analysis of extracts from Raw 264.7 cells, using BRI3BP polyclonal antibody (Cat # PAB17424).  
Peptide "+" means "with peptide blocking".

- Immunohistochemistry (Formalin/PFA-fixed paraffin-embedded sections)

Immunohistochemistry analysis of paraffin-embedded human brain tissue using BRI3BP polyclonal antibody (Cat # PAB17424).  
Peptide "+" means "with peptide blocking".

- Enzyme-linked Immunoabsorbent Assay

## Gene Info — BRI3BP

<b>Entrez GeneID</b>	<a href="#">140707</a>
<b>Protein Accession#</b>	<a href="#">Q8WY22</a>
<b>Gene Name</b>	BRI3BP
<b>Gene Alias</b>	BNAS1, HCCR-2, KG19
<b>Gene Description</b>	BRI3 binding protein
<b>Gene Ontology</b>	<a href="#">Hyperlink</a>
<b>Other Designations</b>	BRI3-binding protein cervical cancer 1 proto-oncogene-binding protein cervical cancer oncogene binding protein