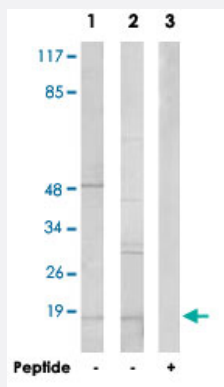


ORAOV1 polyclonal antibody

Catalog # PAB17421

Size 100 ug

Applications



Western Blot (Cell lysate)

Western blot analysis of extracts from 293 cells (Lane 1) and HeLa cells (Lane 2 and lane 3), using ORAOV1 polyclonal antibody (Cat # PAB17421).

Peptide "+" means "with peptide blocking".

Specification

Product Description Rabbit polyclonal antibody raised against synthetic peptide of ORAOV1.

Immunogen A synthetic peptide corresponding to internal of human ORAOV1.

Host Rabbit

Reactivity Human

Specificity This antibody detects endogenous levels of total ORAOV1 protein.

Form Liquid

Recommend Usage Western Blot (1:500-1:1000)
ELISA (1:10000)
The optimal working dilution should be determined by the end user.

Storage Buffer In PBS, pH 7.4 (150mM NaCl, 0.02% sodium azide, 50% glycerol)

Storage Instruction Store at -20°C.
Aliquot to avoid repeated freezing and thawing.

Note

This product contains sodium azide: a POISONOUS AND HAZARDOUS SUBSTANCE which should be handled by trained staff only.

Applications

- Western Blot (Cell lysate)

Western blot analysis of extracts from 293 cells (Lane 1) and HeLa cells (Lane 2 and lane 3), using ORAOV1 polyclonal antibody (Cat # PAB17421).

Peptide "+" means "with peptide blocking".

- Enzyme-linked Immunoabsorbent Assay

Gene Info — ORAOV1

Entrez GeneID	220064
---------------	------------------------

Protein Accession#	Q8WV07
--------------------	------------------------

Gene Name	ORAOV1
-----------	--------

Gene Alias	TAOS1
------------	-------

Gene Description	oral cancer overexpressed 1
------------------	-----------------------------

Omim ID	607224
---------	------------------------

Gene Ontology	Hyperlink
---------------	---------------------------

Other Designations	oral cancer overexpressed protein 1-A
--------------------	---------------------------------------