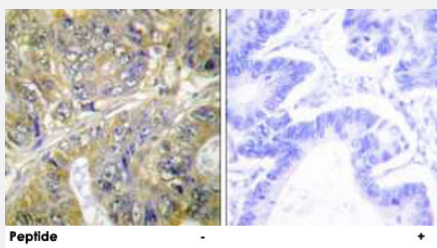


EPS8L3 polyclonal antibody

Catalog # PAB17420

Size 100 ug

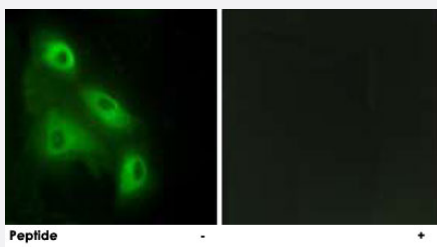
Applications



Immunohistochemistry (Formalin/PFA-fixed paraffin-embedded sections)

Immunohistochemistry analysis of paraffin-embedded human colon carcinoma tissue, using EPS8L3 polyclonal antibody (Cat # PAB17420).

Peptide "+" means "with peptide blocking".



Immunofluorescence

Immunofluorescence analysis of HeLa cells, using EPS8L3 polyclonal antibody (Cat # PAB17420).

Peptide "+" means "with peptide blocking".

Specification

| | |
|---------------------|--|
| Product Description | Rabbit polyclonal antibody raised against synthetic peptide of EPS8L3. |
| Immunogen | A synthetic peptide corresponding to internal of human EPS8L3. |
| Host | Rabbit |
| Reactivity | Human |
| Specificity | This antibody detects endogenous levels of total EPS8L3 protein. |
| Form | Liquid |

| | |
|----------------------------|---|
| Recommend Usage | Immunohistochemistry (1:50-1:100) Immunofluorescence (1:500-1:1000) ELISA (1:20000) The optimal working dilution should be determined by the end user. |
| Storage Buffer | In PBS, pH 7.4 (150mM NaCl, 0.02% sodium azide, 50% glycerol) |
| Storage Instruction | Store at -20°C. Aliquot to avoid repeated freezing and thawing. |
| Note | This product contains sodium azide: a POISONOUS AND HAZARDOUS SUBSTANCE which should be handled by trained staff only. |

Applications

- Immunohistochemistry (Formalin/PFA-fixed paraffin-embedded sections)

Immunohistochemistry analysis of paraffin-embedded human colon carcinoma tissue, using EPS8L3 polyclonal antibody (Cat # PAB17420).

Peptide "+" means "with peptide blocking".

- Immunofluorescence

Immunofluorescence analysis of HeLa cells, using EPS8L3 polyclonal antibody (Cat # PAB17420).

Peptide "+" means "with peptide blocking".

- Enzyme-linked Immunoabsorbent Assay

Gene Info — EPS8L3

| | |
|---------------------------|--|
| Entrez GeneID | 79574 |
| Protein Accession# | Q8TE67 |
| Gene Name | EPS8L3 |
| Gene Alias | EPS8R3, FLJ21522, MGC16817 |
| Gene Description | EPS8-like 3 |
| Gene Ontology | Hyperlink |
| Gene Summary | This gene encodes a protein that is related to epidermal growth factor receptor pathway substrate 8 (EPS8), a substrate for the epidermal growth factor receptor. The function of this protein is unknown. Alternatively spliced transcript variants encoding different isoforms exist. [provided by RefSeq] |

Other Designations

EPS8-related protein 3|OTTHUMP00000013374|OTTHUMP00000013375|epidermal growth factor receptor pathway substrate 8-like protein 3|epidermal growth factor receptor pathway substrate 8-related protein 3
