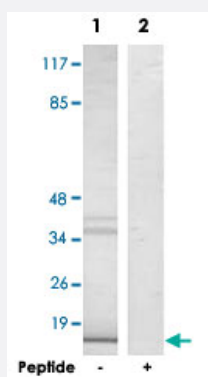


LMO3 polyclonal antibody

Catalog # PAB17418

Size 100 ug

Applications



Western Blot (Cell lysate)

Western blot analysis of extracts from COS-7 cells, using LMO3 polyclonal antibody (Cat # PAB17418).

Peptide "+" means "with peptide blocking".

Specification

Product Description Rabbit polyclonal antibody raised against synthetic peptide of LMO3.

Immunogen A synthetic peptide corresponding to internal of human LMO3.

Host Rabbit

Reactivity Human, Mouse, Rat

Specificity This antibody detects endogenous levels of total LMO3 protein.

Form Liquid

Recommend Usage Western Blot (1:500-1:1000)
ELISA (1:10000)
The optimal working dilution should be determined by the end user.

Storage Buffer In PBS, pH 7.4 (150mM NaCl, 0.02% sodium azide, 50% glycerol)

Storage Instruction Store at -20°C.
Aliquot to avoid repeated freezing and thawing.

Note

This product contains sodium azide: a POISONOUS AND HAZARDOUS SUBSTANCE which should be handled by trained staff only.

Applications

- Western Blot (Cell lysate)

Western blot analysis of extracts from COS-7 cells, using LMO3 polyclonal antibody (Cat # PAB17418).
Peptide "+" means "with peptide blocking".

- Enzyme-linked Immunoabsorbent Assay

Gene Info — LMO3

Entrez GeneID	55885
---------------	-----------------------

Protein Accession#	Q8TAP4
--------------------	------------------------

Gene Name	LMO3
-----------	------

Gene Alias	DAT1, MGC26081, RBTN3, RBTN2, RHOM3, Rhom-3
------------	---

Gene Description	LIM domain only 3 (rhombotin-like 2)
------------------	--------------------------------------

Omim ID	180386
---------	------------------------

Gene Ontology	Hyperlink
---------------	---------------------------

Other Designations	LIM domain only 3 neuronal specific transcription factor DAT1 rhombotin-like 2
--------------------	--