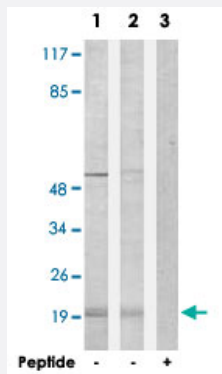


PPP1R14C polyclonal antibody

Catalog # PAB17417 Size 100 ug

Applications



Western Blot (Cell lysate)

Western blot analysis of extracts from Jurkat cells (Lane 1) and COLO 205 cells (Lane 2 and lane 3), using PPP1R14C polyclonal antibody (Cat # PAB17417).

Peptide "+" means "with peptide blocking".

Specification

Product Description Rabbit polyclonal antibody raised against synthetic peptide of PPP1R14C.

Immunogen A synthetic peptide corresponding to internal of human PPP1R14C.

Host Rabbit

Reactivity Human, Mouse, Rat

Specificity This antibody detects endogenous levels of total PPP1R14C protein.

Form Liquid

Recommend Usage Western Blot (1:500-1:1000)
ELISA (1:20000)
The optimal working dilution should be determined by the end user.

Storage Buffer In PBS, pH 7.4 (150mM NaCl, 0.02% sodium azide, 50% glycerol)

Storage Instruction Store at -20°C.
Aliquot to avoid repeated freezing and thawing.

Note

This product contains sodium azide: a POISONOUS AND HAZARDOUS SUBSTANCE which should be handled by trained staff only.

Applications

- Western Blot (Cell lysate)

Western blot analysis of extracts from Jurkat cells (Lane 1) and COLO 205 cells (Lane 2 and lane 3), using PPP1R14C polyclonal antibody (Cat # PAB17417).
Peptide "+" means "with peptide blocking".

- Enzyme-linked Immunoabsorbent Assay

Gene Info — PPP1R14C

Entrez GeneID	81706
---------------	-----------------------

Protein Accession#	Q8TAE6
--------------------	------------------------

Gene Name	PPP1R14C
-----------	----------

Gene Alias	CPI17-like, KEPI, NY-BR-81
------------	----------------------------

Gene Description	protein phosphatase 1, regulatory (inhibitor) subunit 14C
------------------	---

Gene Ontology	Hyperlink
---------------	---------------------------

Gene Summary	O
--------------	---

Other Designations	OTTHUMP00000017412 PKC-potentiased PP1 inhibitory protein kinase C-enhanced PP1 inhibitor serologically defined breast cancer antigen NY-BR-81
--------------------	--

Disease

- [Genetic Predisposition to Disease](#)
- [Mucocutaneous Lymph Node Syndrome](#)
- [Multiple System Atrophy](#)
- [Parkinson disease](#)