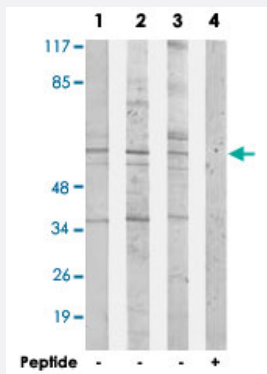


ACRBP polyclonal antibody

Catalog # PAB17414 Size 100 ug

Applications



Western Blot (Cell lysate)

Western blot analysis of extracts from 293 cells (Lane 1), HepG2 cells (Lane 2) and Jurkat cells (Lane 3 and lane 4), using ACRBP polyclonal antibody (Cat # PAB17414).

Peptide "+" means "with peptide blocking".

Specification

| | |
|----------------------------|--|
| Product Description | Rabbit polyclonal antibody raised against synthetic peptide of ACRBP. |
| Immunogen | A synthetic peptide corresponding to internal of human ACRBP. |
| Host | Rabbit |
| Reactivity | Human |
| Specificity | This antibody detects endogenous levels of total ACRBP protein. |
| Form | Liquid |
| Recommend Usage | Western Blot (1:500-1:1000) ELISA (1:10000) The optimal working dilution should be determined by the end user. |
| Storage Buffer | In PBS, pH 7.4 (150mM NaCl, 0.02% sodium azide, 50% glycerol) |
| Storage Instruction | Store at -20°C. Aliquot to avoid repeated freezing and thawing. |

Note

This product contains sodium azide: a POISONOUS AND HAZARDOUS SUBSTANCE which should be handled by trained staff only.

Applications

- Western Blot (Cell lysate)

Western blot analysis of extracts from 293 cells (Lane 1), HepG2 cells (Lane 2) and Jurkat cells (Lane 3 and lane 4), using ACRBP polyclonal antibody (Cat # PAB17414).
Peptide "+" means "with peptide blocking".

- Enzyme-linked Immunoabsorbent Assay

Gene Info — ACRBP

| | |
|---------------|-----------------------|
| Entrez GeneID | 84519 |
|---------------|-----------------------|

| | |
|--------------------|------------------------|
| Protein Accession# | Q8NEB7 |
|--------------------|------------------------|

| | |
|-----------|-------|
| Gene Name | ACRBP |
|-----------|-------|

| | |
|------------|--------------------------|
| Gene Alias | FLJ51160, OY-TES-1, SP32 |
|------------|--------------------------|

| | |
|------------------|-------------------------|
| Gene Description | acrosin binding protein |
|------------------|-------------------------|

| | |
|---------|------------------------|
| Omim ID | 608352 |
|---------|------------------------|

| | |
|---------------|---------------------------|
| Gene Ontology | Hyperlink |
|---------------|---------------------------|

| | |
|--------------|---|
| Gene Summary | The protein encoded by this gene is similar to proacrosin binding protein sp32 precursor found in mouse, guinea pig, and pig. This protein is located in the sperm acrosome and is thought to function as a binding protein to proacrosin for packaging and condensation of the acrosin zymogen in the acrosomal matrix. This protein is a member of the cancer/testis family of antigens and it is found to be immunogenic. In normal tissues, this mRNA is expressed only in testis, whereas it is detected in a range of different tumor types such as bladder, breast, lung, liver, and colon. [provided by RefSeq] |
|--------------|---|

| | |
|--------------------|---------------------------------|
| Other Designations | proacrosin binding protein sp32 |
|--------------------|---------------------------------|