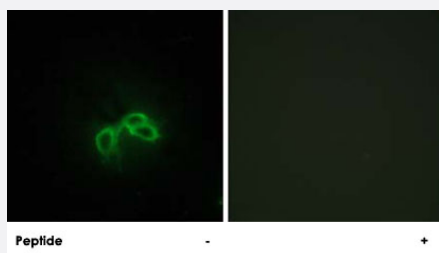


# BLCAP polyclonal antibody

Catalog # PAB17374

Size 100 ug

## Applications



### Immunofluorescence

Immunofluorescence analysis of NIH/3T3 cells, using BLCAP polyclonal antibody (Cat # PAB17374).

Peptide "+" means "with peptide blocking".

## Specification

**Product Description** Rabbit polyclonal antibody raised against synthetic peptide of BLCAP.

**Immunogen** A synthetic peptide corresponding to internal of human BLCAP.

**Host** Rabbit

**Reactivity** Human, Mouse, Rat

**Specificity** This antibody detects endogenous levels of total BLCAP protein.

**Form** Liquid

**Recommend Usage** Immunofluorescence (1:500-1:1000)  
ELISA (1:40000)  
The optimal working dilution should be determined by the end user.

**Storage Buffer** In PBS, pH 7.4 (150mM NaCl, 0.02% sodium azide, 50% glycerol)

**Storage Instruction** Store at -20°C.  
Aliquot to avoid repeated freezing and thawing.

**Note** This product contains sodium azide: a POISONOUS AND HAZARDOUS SUBSTANCE which should be handled by trained staff only.

## Applications

- Immunofluorescence

Immunofluorescence analysis of NIH/3T3 cells, using BLCAP polyclonal antibody (Cat # PAB17374).  
Peptide "+" means "with peptide blocking".

## Gene Info — BLCAP

Entrez GeneID	<a href="#">10904</a>
Protein Accession#	<a href="#">P62952</a>
Gene Name	BLCAP
Gene Alias	BC10
Gene Description	bladder cancer associated protein
Gene Ontology	<a href="#">Hyperlink</a>
Gene Summary	The protein encoded by this gene was identified using a differential display procedure with tumor biopsies obtained from a noninvasive and an invasive bladder transitional cell carcinoma. Although database searches revealed no homology to any human gene at the time of identification, mouse, rat and zebrafish orthologs have since been identified. The function of this differentially expressed protein is not yet known but it appears to be down-regulated during bladder cancer progression. [provided by RefSeq]
Other Designations	OTTHUMP00000030932 OTTHUMP00000178829 OTTHUMP00000178833 OTTHUMP00000178834 OTTHUMP00000178835 bladder cancer related protein (10kD)

## Publication Reference

- [The status, quality, and expansion of the NIH full-length cDNA project: the Mammalian Gene Collection \(MGC\).](#)

Gerhard DS, Wagner L, Feingold EA, Shenmen CM, Grouse LH, Schuler G, Klein SL, Old S, Rasooly R, Good P, Guyer M, Peck AM, Derge JG, Lipman D, Collins FS, Jang W, Sherry S, Feolo M, Misquitta L, Lee E, Rotmistrovsky K, Greenhut SF, Schaefer CF, Buetow K, Bonner TI, Haussler D, Kent J, Kiekhaus M, Furey T, Brent M, Prange C, Schreiber K, Shapiro N, Bhat NK, Hopkins RF, Hsie F, Driscoll T, Soares MB, Casavant TL, Scheetz TE, Brownstein MJ, Usdin TB, Toshiyuki S, Carninci P, Piao Y, Dudekula DB, K

Genome Research 2004 Oct; 14(10B):2121.

- [Inhibition of protein kinase-A by overexpression of the cloned human protein kinase inhibitor.](#)

Olsen SR, Uhler MD.

Molecular Endocrinology 1991 Sep; 5(9):1246.