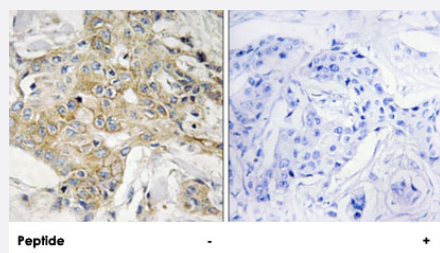


TM4SF1 polyclonal antibody

Catalog # PAB17359 Size 100 ug

Applications



Immunohistochemistry (Formalin/PFA-fixed paraffin-embedded sections)

Immunohistochemistry analysis of paraffin-embedded human breast carcinoma tissue, using TM4SF1 polyclonal antibody (Cat # PAB17359).

Peptide "+" means "with peptide blocking".

Specification

Product Description	Rabbit polyclonal antibody raised against synthetic peptide of TM4SF1.
Immunogen	A synthetic peptide corresponding to internal of human TM4SF1.
Host	Rabbit
Reactivity	Human, Mouse
Specificity	This antibody detects endogenous levels of total TM4SF1 protein.
Form	Liquid
Recommend Usage	Immunohistochemistry (1:50-1:100) ELISA (1:40000) The optimal working dilution should be determined by the end user.
Storage Buffer	In PBS, pH 7.4 (150mM NaCl, 0.02% sodium azide, 50% glycerol)
Storage Instruction	Store at -20°C. Aliquot to avoid repeated freezing and thawing.
Note	This product contains sodium azide: a POISONOUS AND HAZARDOUS SUBSTANCE which should be handled by trained staff only.

Applications

- Immunohistochemistry (Formalin/PFA-fixed paraffin-embedded sections)

Immunohistochemistry analysis of paraffin-embedded human breast carcinoma tissue, using TM4SF1 polyclonal antibody (Cat # PAB17359).

Peptide "+" means "with peptide blocking".

Gene Info — TM4SF1

Entrez GeneID	4071
Protein Accession#	P30408
Gene Name	TM4SF1
Gene Alias	H-L6, L6, M3S1, TAAL6
Gene Description	transmembrane 4 L six family member 1
Omim ID	191155
Gene Ontology	Hyperlink
Gene Summary	The protein encoded by this gene is a member of the transmembrane 4 superfamily, also known as the tetraspanin family. Most of these members are cell-surface proteins that are characterized by the presence of four hydrophobic domains. The proteins mediate signal transduction events that play a role in the regulation of cell development, activation, growth and motility. This encoded protein is a cell surface antigen and is highly expressed in different carcinomas. [provided by RefSeq]
Other Designations	membrane component, chromosome 3, surface marker 1 transmembrane 4 superfamily member 1 tumor-associated antigen L6

Publication Reference

- [Membrane topology of the L6 antigen and identification of the protein epitope recognized by the L6 monoclonal antibody.](#)

Marken JS, Bajorath J, Edwards CP, Farr AG, Schieven GL, Hellstrom I, Hellstrom KE, Aruffo A.

The Journal of Biological Chemistry 1994 Mar; 269(10):7397.

- [Cloning and expression of the tumor-associated antigen L6.](#)

Marken JS, Schieven GL, Hellstrom I, Hellstrom KE, Aruffo A.

PNAS 1992 Apr; 89(8):3503.