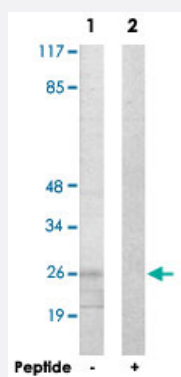


# ANP32C polyclonal antibody

Catalog # PAB17337      Size 100 ug

## Applications



### Western Blot (Cell lysate)

Western blot analysis of extracts from HUVEC cells, using ANP32C polyclonal antibody (Cat # PAB17337).

Peptide "+" means "with peptide blocking".

## Specification

**Product Description** Rabbit polyclonal antibody raised against synthetic peptide of ANP32C.

**Immunogen** A synthetic peptide corresponding to internal of human ANP32C.

**Host** Rabbit

**Reactivity** Human

**Specificity** This antibody detects endogenous levels of total ANP32C protein.

**Form** Liquid

**Recommend Usage** Western Blot (1:500-1:1000)  
ELISA (1:10000)  
The optimal working dilution should be determined by the end user.

**Storage Buffer** In PBS, pH 7.4 (150mM NaCl, 0.02% sodium azide, 50% glycerol)

**Storage Instruction** Store at -20°C.  
Aliquot to avoid repeated freezing and thawing.

**Note**

This product contains sodium azide: a POISONOUS AND HAZARDOUS SUBSTANCE which should be handled by trained staff only.

## Applications

- Western Blot (Cell lysate)

Western blot analysis of extracts from HUVEC cells, using ANP32C polyclonal antibody (Cat # PAB17337).

Peptide "+" means "with peptide blocking".

## Gene Info — ANP32C

Entrez GeneID [23520](#)

Protein Accession# [O43423](#)

Gene Name ANP32C

Gene Alias PP32R1

Gene Description acidic (leucine-rich) nuclear phosphoprotein 32 family, member C

Omim ID [606877](#)

Gene Ontology [Hyperlink](#)

**Gene Summary** Phosphoprotein 32 (PP32) is a tumor suppressor that can inhibit several types of cancers, including prostate and breast cancers. The protein encoded by this gene is one of at least two proteins that are similar in amino acid sequence to PP32 and are part of the same acidic nuclear phosphoprotein gene family. However, unlike PP32, the encoded protein is tumorigenic. The tumor suppressor function of PP32 has been localized to a 25 amino acid region that is divergent between PP32 and the protein encoded by this gene. This gene does not contain introns. [provided by RefSeq]

**Other Designations** acidic nuclear phosphoprotein 32C|pp32 related 1

## Publication Reference

- [The Anp32 family of proteins containing leucine-rich repeats.](#)

Matilla A, Radrizzani M.

Cerebellum (London, England) 2005 Jan; 4(1):7.

Application: IF, IHC, WB, Human, Mammalian cells

- [Identification of a functional mutation in pp32r1 \(ANP32C\).](#)

Kochevar GJ, Brody JR, Kadkol SS, Murphy KM, Pasternack GR.

Human Mutation 2004 Jun; 23(6):546.

- [Modulation of oncogenic potential by alternative gene use in human prostate cancer.](#)

Kadkol SS, Brody JR, Pevsner J, Bai J, Pasternack GR.

Nature Medicine 1999 Mar; 5(3):275.

Application: IHC-P, Human, Human prostate cancer