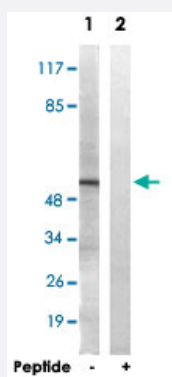


APLF polyclonal antibody

Catalog # PAB17322 Size 100 ug

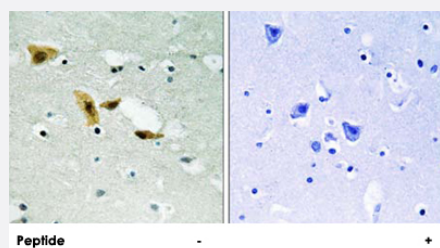
Applications



Western Blot (Cell lysate)

Western blot analysis of extracts from HT-29 cells, using APLF polyclonal antibody (Cat # PAB17322).

Peptide "+" means "with peptide blocking".



Immunohistochemistry (Formalin/PFA-fixed paraffin-embedded sections)

Immunohistochemistry analysis of paraffin-embedded human brain tissue using APLF polyclonal antibody (Cat # PAB17322).

Peptide "+" means "with peptide blocking".

Specification

Product Description	Rabbit polyclonal antibody raised against synthetic peptide of APLF.
Immunogen	A synthetic peptide corresponding to residues surrounding serine 116 of human APLF.
Host	Rabbit
Reactivity	Human, Mouse
Specificity	This antibody detects endogenous levels of total APLF protein.
Form	Liquid

Recommend Usage	Western Blot (1:500-1:1000) Immunohistochemistry (1:50-1:100) ELISA (1:40000) The optimal working dilution should be determined by the end user.
Storage Buffer	In PBS, pH 7.4 (150mM NaCl, 0.02% sodium azide, 50% glycerol)
Storage Instruction	Store at -20°C. Aliquot to avoid repeated freezing and thawing.
Note	This product contains sodium azide: a POISONOUS AND HAZARDOUS SUBSTANCE which should be handled by trained staff only.

Applications

- Western Blot (Cell lysate)

Western blot analysis of extracts from HT-29 cells, using APLF polyclonal antibody (Cat # PAB17322).
Peptide "+" means "with peptide blocking".

- Immunohistochemistry (Formalin/PFA-fixed paraffin-embedded sections)

Immunohistochemistry analysis of paraffin-embedded human brain tissue using APLF polyclonal antibody (Cat # PAB17322).
Peptide "+" means "with peptide blocking".

Gene Info — APLF

Entrez GeneID	200558
Protein Accession#	Q8IW19
Gene Name	APLF
Gene Alias	APFL, C2orf13, MGC47799, PALF, Xip1
Gene Description	aprataxin and PNKP like factor
Omim ID	611035
Gene Ontology	Hyperlink
Gene Summary	C2ORF13 is a component of the cellular response to chromosomal DNA single- and double-strand breaks (Iles et al., 2007 [PubMed 17353262]).[supplied by OMIM]
Other Designations	PNK and APTX-like FHA protein aprataxin- and PNK-like factor

Publication Reference

- [Domain-specific interactions of human HP1-type chromodomain proteins and inner nuclear membrane protein LBR.](#)

Ye Q, Callebaut I, Pezhman A, Courvalin JC, Worman HJ.

The Journal of Biological Chemistry 1997 Jun; 272(23):14983.

- [Interaction between an integral protein of the nuclear envelope inner membrane and human chromodomain proteins homologous to Drosophila HP1.](#)

Ye Q, Worman HJ.

The Journal of Biological Chemistry 1996 Jun; 271(25):14653.

- [Molecular cloning of a human homologue of Drosophila heterochromatin protein HP1 using anti-centromere autoantibodies with anti-chromo specificity.](#)

Saunders WS, Chue C, Goebel M, Craig C, Clark RF, Powers JA, Eissenberg JC, Elgin SC, Rothfield NF, Earnshaw WC.

Journal of Cell Science 1993 Feb; 104:573.