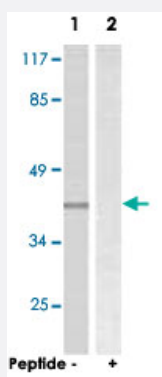


LAT polyclonal antibody

Catalog # PAB17296

Size 100 ug

Applications



Western Blot (Cell lysate)

Western blot analysis of extracts from A-549 cells, using LAT polyclonal antibody (Cat # PAB17296).

Peptide "+" means "with peptide blocking".

Specification

Product Description

Rabbit polyclonal antibody raised against synthetic peptide of LAT.

Immunogen

A synthetic peptide corresponding to residues surrounding serine 363 of human LAT.

Host

Rabbit

Reactivity

Human, Mouse

Specificity

This antibody detects endogenous levels of total LAT protein.

Form

Liquid

Recommend Usage

Western Blot (1:500-1:1000)

ELISA (1:5000)

The optimal working dilution should be determined by the end user.

Storage Buffer

In PBS, pH 7.4 (150mM NaCl, 0.02% sodium azide, 50% glycerol)

Storage Instruction

Store at -20°C.

Aliquot to avoid repeated freezing and thawing.

Note

This product contains sodium azide: a POISONOUS AND HAZARDOUS SUBSTANCE which should be handled by trained staff only.

Applications

- Western Blot (Cell lysate)

Western blot analysis of extracts from A-549 cells, using LAT polyclonal antibody (Cat # PAB17296).

Peptide "+" means "with peptide blocking".

Gene Info — LAT

Entrez GeneID [27040](#)

Protein Accession# [O43561](#)

Gene Name LAT

Gene Alias LAT1, pp36

Gene Description linker for activation of T cells

Omim ID [602354](#)

Gene Ontology [Hyperlink](#)

Gene Summary

The protein encoded by this gene is phosphorylated by ZAP-70/Syk protein tyrosine kinases following activation of the T-cell antigen receptor (TCR) signal transduction pathway. This transmembrane protein localizes to lipid rafts and acts as a docking site for SH2 domain-containing proteins. Upon phosphorylation, this protein recruits multiple adaptor proteins and downstream signaling molecules into multimolecular signaling complexes located near the site of TCR engagement. Alternative splicing results in multiple transcript variants encoding different isoforms. [provided by RefSeq]

Other Designations 36 kDa phospho-tyrosine adaptor protein

Publication Reference

- [The four distal tyrosines are required for LAT-dependent signaling in FcepsilonRI-mediated mast cell activation.](#)

Saitoh S, Odom S, Gomez G, Sommers CL, Young HA, Rivera J, Samelson LE.

The Journal of Experimental Medicine 2003 Sep; 198(5):831.

Application: Flow Cyt, IP, WB, Mouse, Mouse bone marrow-derived mast cells

- [Identification of a membrane protein, LAT-2, that Co-expresses with 4F2 heavy chain, an L-type amino acid transport activity with broad specificity for small and large zwitterionic amino acids.](#)

Pineda M, Fernandez E, Torrents D, Estevez R, Lopez C, Camps M, Lloberas J, Zorzano A, Palacin M.

The Journal of Biological Chemistry 1999 Jul; 274(28):19738.

- [A LAT-associated function reduces productive-cycle gene expression during acute infection of murine sensory neurons with herpes simplex virus type 1.](#)

Garber DA, Schaffer PA, Knipe DM.

Journal of Virology 1997 Aug; 71(8):5885.

Pathway

- [Fc epsilon RI signaling pathway](#)
- [Fc gamma R-mediated phagocytosis](#)
- [Natural killer cell mediated cytotoxicity](#)
- [T cell receptor signaling pathway](#)