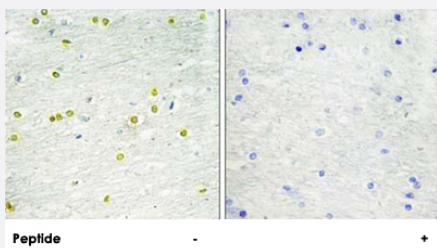


# Histone H3 polyclonal antibody

Catalog # PAB17295

Size 100 ug

## Applications



### Immunohistochemistry (Formalin/PFA-fixed paraffin-embedded sections)

Immunohistochemistry analysis of paraffin-embedded human brain tissue using Histone H3 polyclonal antibody (Cat # PAB17295).

Peptide "+" means "with peptide blocking".

## Specification

**Product Description** Rabbit polyclonal antibody raised against synthetic peptide of Histone H3.

**Immunogen** A synthetic peptide corresponding to internal of human Histone H3.

**Host** Rabbit

**Reactivity** Human, Mouse, Rat

**Specificity** This antibody detects endogenous levels of total Histone H3 protein.

**Form** Liquid

**Recommend Usage** Immunohistochemistry (1:50-1:100)  
ELISA (1:5000)  
The optimal working dilution should be determined by the end user.

**Storage Buffer** In PBS, pH 7.4 (150mM NaCl, 0.02% sodium azide, 50% glycerol)

**Storage Instruction** Store at -20°C.  
Aliquot to avoid repeated freezing and thawing.

**Note** This product contains sodium azide: a POISONOUS AND HAZARDOUS SUBSTANCE which should be handled by trained staff only.

## Applications

- Immunohistochemistry (Formalin/PFA-fixed paraffin-embedded sections)

Immunohistochemistry analysis of paraffin-embedded human brain tissue using Histone H3 polyclonal antibody (Cat # PAB17295).

Peptide "+" means "with peptide blocking".

## Publication Reference

- [Isolation and characterization of proteins associated with histone H3 tails in vivo.](#)

Heo K, Kim B, Kim K, Choi J, Kim H, Zhan Y, Ranish JA, An W.

The Journal of Biological Chemistry 2007 Apr; 282(21):15476.

- [Identification and characterization of the human Set1B histone H3-Lys4 methyltransferase complex.](#)

Lee JH, Tate CM, You JS, Skalnik DG.

The Journal of Biological Chemistry 2007 Mar; 282(18):13419.