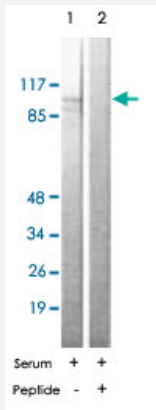


EEF2 polyclonal antibody

Catalog # PAB17280

Size 100 ug

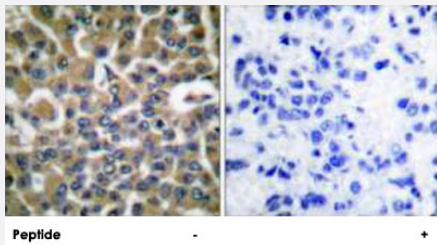
Applications



Western Blot (Cell lysate)

Western blot analysis of extracts from NIH/3T3 cells treated with serum (10%, 30 mins), using EEF2 polyclonal antibody (Cat # PAB17280).

Peptide "+" means "with peptide blocking".



Immunohistochemistry (Formalin/PFA-fixed paraffin-embedded sections)

Immunohistochemical analysis of paraffin-embedded human breast carcinoma tissue using EEF2 polyclonal antibody (Cat # PAB17280).

Peptide "+" means "with peptide blocking".

Specification

Product Description	Rabbit polyclonal antibody raised against synthetic peptide of EEF2.
Immunogen	A synthetic peptide corresponding to residues surrounding threonine 56 of human EEF2.
Host	Rabbit
Reactivity	Human, Mouse, Rat
Specificity	This antibody detects endogenous levels of total EEF2 protein.
Form	Liquid

Recommend Usage	Western Blot (1:300-1:1000) Immunohistochemistry (1:50-1:100) Immunofluorescence (1:500-1:1000) ELISA (1:5000) The optimal working dilution should be determined by the end user.
Storage Buffer	In PBS, pH 7.4 (150mM NaCl, 0.02% sodium azide, 50% glycerol)
Storage Instruction	Store at -20°C. Aliquot to avoid repeated freezing and thawing.
Note	This product contains sodium azide: a POISONOUS AND HAZARDOUS SUBSTANCE which should be handled by trained staff only.

Applications

- Western Blot (Cell lysate)

Western blot analysis of extracts from NIH/3T3 cells treated with serum (10%, 30 mins), using EE2 polyclonal antibody (Cat # PAB17280).

Peptide "+" means "with peptide blocking".

- Immunohistochemistry (Formalin/PFA-fixed paraffin-embedded sections)

Immunohistochemical analysis of paraffin-embedded human breast carcinoma tissue using EE2 polyclonal antibody (Cat # PAB17280).

Peptide "+" means "with peptide blocking".

Gene Info — EE2

Entrez GeneID	1938
Protein Accession#	P13639
Gene Name	EE2
Gene Alias	EE2-2, EF2
Gene Description	eukaryotic translation elongation factor 2
Omim ID	130610
Gene Ontology	Hyperlink
Gene Summary	This gene encodes a member of the GTP-binding translation elongation factor family. This protein is an essential factor for protein synthesis. It promotes the GTP-dependent translocation of the nascent protein chain from the A-site to the P-site of the ribosome. This protein is completely inactivated by EF-2 kinase phosphorylation. [provided by RefSeq]

Other Designations

polypeptidyl-tRNA translocase

Publication Reference

- [Exercise rapidly increases eukaryotic elongation factor 2 phosphorylation in skeletal muscle of men.](#)

Rose AJ, Broholm C, Kiillerich K, Finn SG, Proud CG, Rider MH, Richter EA, Kiens B.

The Journal of Physiology 2005 Oct; 569(Pt 1):223.

- [Levels of mTOR and its downstream targets 4E-BP1, eEF2, and eEF2 kinase in relationships with tau in Alzheimer's disease brain.](#)

Li X, Alafuzoff I, Soininen H, Winblad B, Pei JJ.

The FEBS Journal 2005 Aug; 272(16):4211.

Disease

- [Tobacco Use Disorder](#)