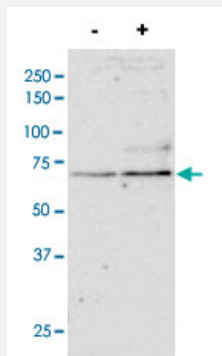


# SRF polyclonal antibody

Catalog # PAB17277      Size 100 ug

## Applications



### Western Blot (Cell lysate)

SRF polyclonal antibody (Cat # PAB17277) staining (1 ug/mL) of TGF- $\beta$ 1-treated primary cultured human lung fibroblast lysate. Primary incubated for 1 hour. Detected by western blot using chemiluminescence. Data kindly provided by Nickolai Dulin, Dept Medicine/Pulmonary, Chicago, USA.

## Specification

<b>Product Description</b>	Goat polyclonal antibody raised against synthetic peptide of SRF.
<b>Immunogen</b>	A synthetic peptide corresponding to amino acids at internal region of human SRF.
<b>Sequence</b>	C-QASPSRDSSTDLTQ
<b>Host</b>	Goat
<b>Theoretical MW (kDa)</b>	51.6
<b>Reactivity</b>	Human
<b>Form</b>	Liquid
<b>Purification</b>	Antigen affinity purification
<b>Concentration</b>	0.5 mg/mL
<b>Recommend Usage</b>	ELISA (1:32000) Western Blot (1-3 ug/mL) The optimal working dilution should be determined by the end user.

Storage Buffer	In Tris saline, pH 7.3 (0.5% BSA, 0.02% sodium azide)
Storage Instruction	Store at -20°C. Aliquot to avoid repeated freezing and thawing.
Note	This product contains sodium azide: a POISONOUS AND HAZARDOUS SUBSTANCE which should be handled by trained staff only.

## Applications

- Western Blot (Cell lysate)

SRF polyclonal antibody (Cat # PAB17277) staining (1 ug/mL) of TGF- $\beta$ -treated primary cultured human lung fibroblast lysate. Primary incubated for 1 hour. Detected by western blot using chemiluminescence. Data kindly provided by Nickolai Dulin, Dept Medicine/Pulmonary, Chicago, USA.

- Enzyme-linked Immunoabsorbent Assay

## Gene Info — SRF

Entrez GeneID	<a href="#">6722</a>
Protein Accession#	<a href="#">NP_003122.1</a>
Gene Name	SRF
Gene Alias	MCM1
Gene Description	serum response factor (c-fos serum response element-binding transcription factor)
Omim ID	<a href="#">600589</a>
Gene Ontology	<a href="#">Hyperlink</a>
Gene Summary	<p>This gene encodes a ubiquitous nuclear protein that stimulates both cell proliferation and differentiation. It is a member of the MADS (MCM1, Agamous, Deficiens, and SRF) box superfamily of transcription factors. This protein binds to the serum response element (SRE) in the promoter region of target genes. This protein regulates the activity of many immediate-early genes, for example c-fos, and thereby participates in cell cycle regulation, apoptosis, cell growth, and cell differentiation. This gene is the downstream target of many pathways; for example, the mitogen-activated protein kinase pathway (MAPK) that acts through the ternary complex factors (TCFs). [provided by RefSeq]</p>
Other Designations	OTTHUMP00000039820

## Publication Reference

- [Downregulation of SRF-FOS-JUNB pathway in fumarate hydratase deficiency and in uterine leiomyomas.](#)

Raimundo N, Vanharanta S, Aaltonen LA, Hovatta I, Suomalainen A.

Oncogene 2009 Jan; 28(9):1261.

## Pathway

- [MAPK signaling pathway](#)

## Disease

- [Alzheimer disease](#)
- [Cardiovascular Diseases](#)
- [Diabetes Complications](#)
- [Diabetes Mellitus](#)
- [Edema](#)
- [Metabolic Syndrome X](#)
- [Neoplasms](#)
- [Osteoporosis](#)
- [Tobacco Use Disorder](#)