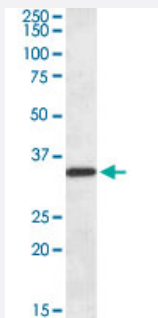


FGL1 polyclonal antibody

Catalog # PAB17261 Size 100 ug

Applications



Western Blot (Tissue lysate)

FGL1 polyclonal antibody (Cat # PAB17261) (0.1 ug/mL) staining of human liver lysate (35 ug protein in RIPA buffer). Primary incubation was 1 hour. Detected by chemiluminescence.

Specification

Product Description	Goat polyclonal antibody raised against synthetic peptide of FGL1.
Immunogen	A synthetic peptide corresponding to amino acids at internal region of human FGL1.
Sequence	C-ETRVKQQQVKIKQ
Host	Goat
Theoretical MW (kDa)	36.4
Reactivity	Human
Specificity	Reported variants represent identical protein: NP_963846.1, NP_963847.1, NP_671736.2, NP_004458.3
Form	Liquid
Purification	Antigen affinity purification
Concentration	0.5 mg/mL

Recommend Usage	ELISA (1:16000) Western Blot (0.1-0.3 ug/mL) The optimal working dilution should be determined by the end user.
Storage Buffer	In Tris saline, pH 7.3 (0.5% BSA, 0.02% sodium azide)
Storage Instruction	Store at -20°C. Aliquot to avoid repeated freezing and thawing.
Note	This product contains sodium azide: a POISONOUS AND HAZARDOUS SUBSTANCE which should be handled by trained staff only.

Applications

- Western Blot (Tissue lysate)

FGL1 polyclonal antibody (Cat # PAB17261) (0.1 ug/mL) staining of human liver lysate (35 ug protein in RIPA buffer). Primary incubation was 1 hour. Detected by chemiluminescence.

- Enzyme-linked Immunoabsorbent Assay

Gene Info — FGL1

Entrez GeneID	2267
Protein Accession#	NP_004458.3
Gene Name	FGL1
Gene Alias	HFREP1, HP-041, LFIRE1, MGC12455
Gene Description	fibrinogen-like 1
Omim ID	605776
Gene Ontology	Hyperlink
Gene Summary	Fibrinogen-like 1 is a member of the fibrinogen family. This protein is homologous to the carboxy terminus of the fibrinogen beta- and gamma- subunits which contains the four conserved cysteines of fibrinogens and fibrinogen related proteins. However, this protein lacks the platelet-binding site, cross-linking region and a thrombin-sensitive site which are necessary for fibrin clot formation. This protein may play a role in the development of hepatocellular carcinomas. Four alternatively spliced transcript variants encoding the same protein exist for this gene. [provided by RefSeq]
Other Designations	OTTHUMP00000122468 hepassocin hepatocellular carcinoma-related sequence hepatocyte-derived fibrinogen-related protein 1

Publication Reference

- [Fibrinogen-like protein 1, a hepatocyte derived protein is an acute phase reactant.](#)

Liu Z, Ukomadu C.

Biochemical and Biophysical Research Communications 2007 Nov; 365(4):729.

Disease

- [Carcinoma](#)
- [Cardiovascular Diseases](#)
- [Coronary Disease](#)
- [Diabetes Mellitus](#)
- [Disease Progression](#)
- [Edema](#)
- [Genetic Predisposition to Disease](#)
- [Hepatitis C](#)
- [Liver Neoplasms](#)
- [Tobacco Use Disorder](#)
- [Viremia](#)